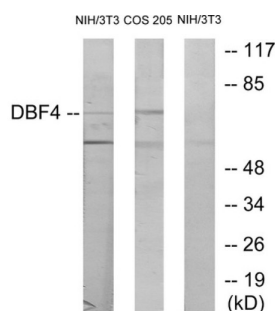


Protein DBF4 Homolog A (DBF4) Antibody

Catalogue No.: abx013828



Western blot analysis of extracts from NIH-3T3 cells treated with H₂O₂ (100uM, 30mins) and COS-7 cells treated with PMA (125mg/ml, 30mins), using DBF4 antibody.

Rabbit polyclonal antibody against DBF4 protein. Immunogen region is N-terminal.

Target:	Protein DBF4 Homolog A (DBF4)
Clonality:	Polyclonal
Reactivity:	Human, Mouse
Tested Applications:	ELISA, WB
Host:	Rabbit
Recommended dilutions:	WB: 1/500 - 1/3000, ELISA: 1/10000. Optimal dilutions/concentrations should be determined by the end user.
Conjugation:	Unconjugated
Immunogen:	The antiserum was produced against synthesized peptide derived from N-terminal of human DBF4.
Isotype:	IgG
Form:	Liquid
Purification:	Purified from rabbit antiserum by affinity chromatography using epitope-specific immunogen.
Storage:	Aliquot and store at -20°C. Avoid repeated freeze/thaw cycles.
UniProt Primary AC:	Q9UBU7 (UniProt , ExPASy)
String:	9606.ENSP00000265728
Buffer:	PBS (without Mg ²⁺ and Ca ²⁺), pH 7.4, 150 mM NaCl, 0.02% sodium azide, 50% glycerol.

Datasheet

Version: 3.0.0

Revision date: 16 Mar 2025



Concentration: 1 mg/ml

Note: THIS PRODUCT IS FOR RESEARCH USE ONLY. NOT FOR USE IN DIAGNOSTIC, THERAPEUTIC OR COSMETIC PROCEDURES. NOT FOR HUMAN OR ANIMAL CONSUMPTION.

For Reference Only