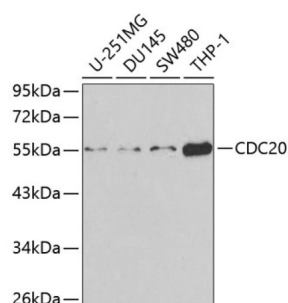


Cell Division Cycle 20 (CDC20) Antibody

Catalogue No.: abx001143



Western blot analysis of extracts of various cell lines using CDC20 Antibody (1/1000 dilution).

CDC20 Antibody is a Rabbit Polyclonal antibody against CDC20. CDC20 appears to act as a regulatory protein interacting with several other proteins at multiple points in the cell cycle. It is required for two microtubule-dependent processes, nuclear movement prior to anaphase and chromosome separation.

Target: Cell Division Cycle 20 (CDC20)

Clonality: Polyclonal

Reactivity: Human

Tested Applications: WB

Host: Rabbit

Recommended dilutions: WB: 1/500 - 1/2000. Optimal dilutions/concentrations should be determined by the end user.

Conjugation: Unconjugated

Immunogen: Recombinant fusion protein corresponding to human CDC20

Isotype: IgG

Form: Liquid

Purification: Purified by affinity chromatography.

Storage: Aliquot and store at -20°C. Avoid repeated freeze/thaw cycles.

UniProt Primary AC: Q12834 ([UniProt](#), [ExPASy](#))

Gene Symbol: CDC20

Datasheet

Version: 3.0.0

Revision date: 23 Jun 2025



GeneID: [991](#)

NCBI Accession: NP_001246.2

KEGG: hsa:991

String: [9606.ENSP00000361540](#)

Molecular Weight: Calculated MW: 54 kDa
Observed MW: 55 kDa

Buffer: PBS, pH 7.3, containing 0.02% sodium azide, 50% glycerol.

Concentration: 1 mg/ml

Note: THIS PRODUCT IS FOR RESEARCH USE ONLY. NOT FOR USE IN DIAGNOSTIC, THERAPEUTIC OR COSMETIC PROCEDURES. NOT FOR HUMAN OR ANIMAL CONSUMPTION.

For Reference Only