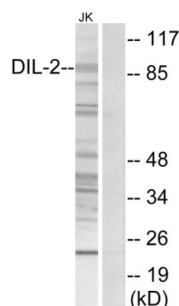
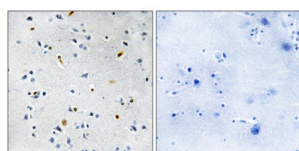


Differentially Expressed In Cancerous And Non-Cancerous Lung Cells 2 (DIL-2) Antibody

Catalogue No.: abx013850



Western blot analysis of extracts from Jurkat cells, using DIL-2 antibody.



Immunohistochemistry analysis of paraffin-embedded human brain tissue using DIL-2 antibody.

Rabbit polyclonal antibody against DIL-2 protein. Immunogen region is Internal.

Target:	Differentially Expressed In Cancerous And Non-Cancerous Lung Cells 2 (DIL-2)
Clonality:	Polyclonal
Reactivity:	Human, Mouse
Tested Applications:	ELISA, WB, IHC
Host:	Rabbit
Recommended dilutions:	WB: 1/500 - 1/3000, IHC: 1/50 - 1/100, ELISA: 1/1000. Optimal dilutions/concentrations should be determined by the end user.
Conjugation:	Unconjugated
Immunogen:	The antiserum was produced against synthesized peptide derived from internal of human DIL-2.
Isotype:	IgG
Form:	Liquid

Datasheet

Version: 5.0.0
Revision date: 30 Jun 2025



Purification: Purified from rabbit antiserum by affinity chromatography using epitope-specific immunogen.

Storage: Aliquot and store at -20°C. Avoid repeated freeze/thaw cycles.

UniProt Primary AC: Q9ULW0 ([UniProt](#), [ExPASy](#))

String: [9606.ENSP00000300403](#)

Sequence: CQVEDFHKRTPNRYH

Buffer: PBS (without Mg^{2+} and Ca^{2+}), pH 7.4, 150 mM NaCl, 0.02% sodium azide, 50% glycerol.

Concentration: 1 mg/ml

Note: THIS PRODUCT IS FOR RESEARCH USE ONLY. NOT FOR USE IN DIAGNOSTIC, THERAPEUTIC OR COSMETIC PROCEDURES. NOT FOR HUMAN OR ANIMAL CONSUMPTION.

For Reference Only