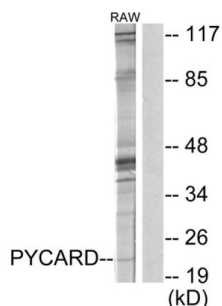
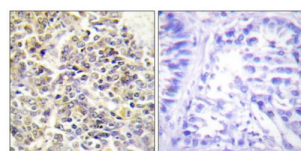


Apoptosis-Associated Speck-Like Protein Containing A CARD (ASC) Antibody

Catalogue No.: abx013852



Western blot analysis of extracts from RAW264.7 cells, using ASC antibody.



Immunohistochemistry analysis of paraffin-embedded human lung carcinoma tissue using ASC antibody. The image on the right is treated with synthetic peptide.

Rabbit polyclonal antibody against ASC protein.

Target: Apoptosis-Associated Speck-Like Protein Containing A CARD (ASC)

Clonality: Polyclonal

Reactivity: Human, Mouse, Rat

Tested Applications: ELISA, WB, IHC

Host: Rabbit

Recommended dilutions: ELISA: 1/40000, WB: 1/500 - 1/3000, IHC: 1/50 - 1/100. Optimal dilutions/concentrations should be determined by the end user.

Conjugation: Unconjugated

Immunogen: The antiserum was produced against synthesized peptide derived from the internal region of human ASC.

Isotype: IgG

Form: Liquid

Datasheet

Version: 5.0.0
Revision date: 08 May 2025



Purification:	Purified from rabbit antiserum by affinity chromatography using epitope-specific immunogen.
Storage:	Aliquot and store at -20°C. Avoid repeated freeze/thaw cycles.
UniProt Primary AC:	Q9ULZ3 (UniProt , ExPASy)
String:	9606.ENSP00000247470
Sequence:	CENLTAEELKKFK
Buffer:	PBS (without Mg^{2+} and Ca^{2+}), pH 7.4, 150 mM NaCl, 0.02% sodium azide, 50% glycerol.
Specificity:	Detects endogenous levels of total ASC protein.
Concentration:	1 mg/ml
Note:	THIS PRODUCT IS FOR RESEARCH USE ONLY. NOT FOR USE IN DIAGNOSTIC, THERAPEUTIC OR COSMETIC PROCEDURES. NOT FOR HUMAN OR ANIMAL CONSUMPTION.

For Reference Only