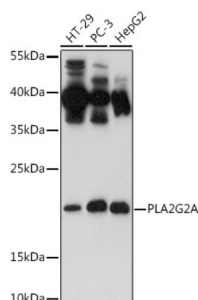


Phospholipase A2, Group II A (PLA2G2A) Antibody

Catalogue No.: abx001146



Western blot analysis of various lysates using PLA2G2A Antibody at 1/500 dilution. Secondary antibody: HRP-conjugated Goat anti-Rabbit IgG (H+L) at 1/10000 dilution. Lysates/proteins: 25 µg per lane. Blocking buffer: 3% nonfat dry milk in TBST. Exposure time: 90s.

PLA2G2A Antibody is a Rabbit Polyclonal antibody against PLA2G2A. The protein encoded by this gene is a member of the phospholipase A2 family (PLA2). PLA2s constitute a diverse family of enzymes with respect to sequence, function, localization, and divalent cation requirements. This gene product belongs to group II, which contains secreted form of PLA2, an extracellular enzyme that has a low molecular mass and requires calcium ions for catalysis. It catalyzes the hydrolysis of the sn-2 fatty acid acyl ester bond of phosphoglycerides, releasing free fatty acids and lysophospholipids, and thought to participate in the regulation of the phospholipid metabolism in biomembranes. Several alternatively spliced transcript variants with different 5' UTRs have been found for this gene.[provided by RefSeq, Sep 2009].

Target:	Phospholipase A2, Group II A (PLA2G2A)
Clonality:	Polyclonal
Reactivity:	Human
Tested Applications:	ELISA, WB
Host:	Rabbit
Recommended dilutions:	ELISA: 1 µg/ml, WB: 1/100 - 1/500. Optimal dilutions/concentrations should be determined by the end user.
Conjugation:	Unconjugated
Immunogen:	Recombinant fusion protein containing a sequence corresponding to amino acids 21-144 of human PLA2G2A.
Isotype:	IgG
Form:	Liquid
Purification:	Purified by affinity chromatography.
Storage:	Aliquot and store at -20°C. Avoid repeated freeze/thaw cycles.

Datasheet

Version: 4.0.0
Revision date: 12 Mar 2025



UniProt Primary AC: P14555 ([UniProt](#), [ExPASy](#))

Gene Symbol: PLA2G2A

GeneID: [5320](#)

NCBI Accession: NP_001155201.1

KEGG: hsa:5320

String: [9606.ENSP00000383364](#)

Molecular Weight: Calculated MW: 16 kDa
Observed MW: 18 kDa

Buffer: PBS, pH 7.3, containing 0.02% sodium azide, 50% glycerol.

Concentration: > 0.2 mg/ml

Note: THIS PRODUCT IS FOR RESEARCH USE ONLY. NOT FOR USE IN DIAGNOSTIC, THERAPEUTIC OR COSMETIC PROCEDURES. NOT FOR HUMAN OR ANIMAL CONSUMPTION.

For Reference Only