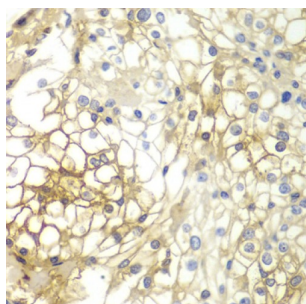


Syndecan 1 (SDC1) Antibody

Catalogue No.: abx001147



Immunohistochemistry of paraffin-embedded Human kidney cancer using Syndecan-1 Antibody (1/200 dilution, 40x lens).

SDC1 Antibody is a Rabbit Polyclonal antibody against SDC1. The protein encoded by this gene is a transmembrane (type I) heparan sulfate proteoglycan and is a member of the syndecan proteoglycan family. The syndecans mediate cell binding, cell signaling, and cytoskeletal organization and syndecan receptors are required for internalization of the HIV-1 tat protein. The syndecan-1 protein functions as an integral membrane protein and participates in cell proliferation, cell migration and cell-matrix interactions via its receptor for extracellular matrix proteins. Altered syndecan-1 expression has been detected in several different tumor types. While several transcript variants may exist for this gene, the full-length nature of only two have been described to date. These two represent the major variants of this gene and encode the same protein. [provided by RefSeq, Jul 2008].

Target:	Syndecan 1 (SDC1)
Clonality:	Polyclonal
Reactivity:	Human, Mouse
Tested Applications:	IHC
Host:	Rabbit
Recommended dilutions:	IHC-P: 1/50 - 1/200. Not tested in IHC-F. Optimal dilutions/concentrations should be determined by the end user.
Conjugation:	Unconjugated
Immunogen:	Recombinant fusion protein corresponding to human Syndecan-1
Isotype:	IgG
Form:	Liquid
Purification:	Purified by affinity chromatography.
Storage:	Aliquot and store at -20°C. Avoid repeated freeze/thaw cycles.

Datasheet

Version: 5.0.0
Revision date: 05 Mar 2025



UniProt Primary AC: P18827 ([UniProt](#), [ExPASy](#))

Gene Symbol: SDC1

GeneID: [6382](#)

NCBI Accession: NP_002988.4

KEGG: hsa:6382

String: [9606.ENSP00000370542](#)

Buffer: PBS, pH 7.3, containing 0.02% sodium azide, 50% glycerol.

Concentration: 1 mg/ml

Note: THIS PRODUCT IS FOR RESEARCH USE ONLY. NOT FOR USE IN DIAGNOSTIC, THERAPEUTIC OR COSMETIC PROCEDURES. NOT FOR HUMAN OR ANIMAL CONSUMPTION.

For Reference Only