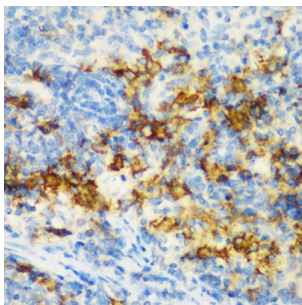
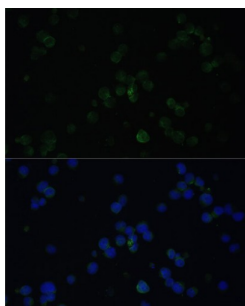


Cluster of Differentiation 3d (CD3D) Antibody

Catalogue No.: abx001150



Immunohistochemistry of paraffin-embedded Rat spleen using CD3D Antibody (1/200 dilution, 40x lens).



Immunofluorescence analysis of Jurkat cells using CD3D Antibody (1/100 dilution). Blue: DAPI for nuclear staining.

CD3D Antibody is a Rabbit Polyclonal antibody against CD3D. The protein encoded by this gene is part of the T-cell receptor/CD3 complex (TCR/CD3 complex) and is involved in T-cell development and signal transduction. The encoded membrane protein represents the delta subunit of the CD3 complex, and along with four other CD3 subunits, binds either TCR alpha/beta or TCR gamma/delta to form the TCR/CD3 complex on the surface of T-cells. Defects in this gene are a cause of severe combined immunodeficiency autosomal recessive T-cell-negative/B-cell-positive/NK-cell-positive (SCIDBNK). Two transcript variants encoding different isoforms have been found for this gene. Other variants may also exist, but the full-length nature of their transcripts has yet to be defined. [provided by RefSeq, Feb 2009].

Target: Cluster of Differentiation 3d (CD3D)

Clonality: Polyclonal

Reactivity: Human, Rat

Tested Applications: IHC, IF/ICC

Host: Rabbit

Recommended dilutions: IHC-P: 1/50 - 1/100, IF/ICC: 1/50 - 1/100. Not tested in IHC-F. Optimal dilutions/concentrations should be determined by the end user.

Conjugation: Unconjugated

Immunogen: Recombinant fusion protein corresponding to human CD3D

Datasheet

Version: 5.0.0

Revision date: 05 Mar 2025



| | |
|---------------------|--|
| Isotype: | IgG |
| Form: | Liquid |
| Purification: | Purified by affinity chromatography. |
| Storage: | Aliquot and store at -20°C. Avoid repeated freeze/thaw cycles. |
| UniProt Primary AC: | P04234 (UniProt , ExPASy) |
| Gene Symbol: | CD3D |
| GeneID: | 915 |
| NCBI Accession: | NP_000723.1 |
| KEGG: | hsa:915 |
| String: | 9606.ENSP00000300692 |
| Buffer: | PBS, pH 7.3, containing 0.02% sodium azide, 50% glycerol. |
| Concentration: | 1 mg/ml |
| Note: | THIS PRODUCT IS FOR RESEARCH USE ONLY. NOT FOR USE IN DIAGNOSTIC, THERAPEUTIC OR COSMETIC PROCEDURES. NOT FOR HUMAN OR ANIMAL CONSUMPTION. |