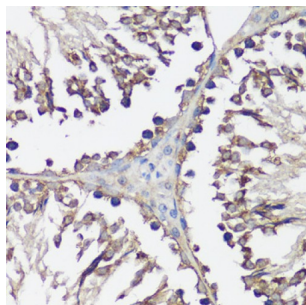
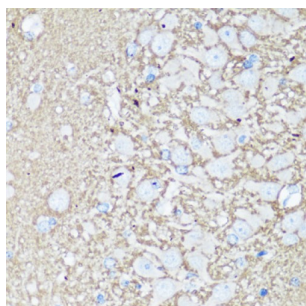


Vesicle-Associated Membrane Protein 2 (VAMP2) Antibody

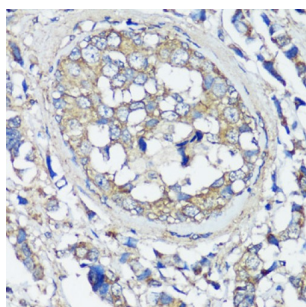
Catalogue No.: abx001161



Immunohistochemistry of paraffin-embedded Rat testis using VAMP2 Antibody (1/100 dilution, 40x lens).



Immunohistochemistry of paraffin-embedded Rat brain using VAMP2 Antibody (1/100 dilution, 40x lens).



Immunohistochemistry of paraffin-embedded Human breast cancer using VAMP2 Antibody (1/100 dilution, 40x lens).

VAMP2 Antibody is a Rabbit Polyclonal antibody against VAMP2. The protein encoded by this gene is a member of the vesicle-associated membrane protein (VAMP)/synaptobrevin family. Synaptobrevins/VAMPs, syntaxins, and the 25-kD synaptosomal-associated protein SNAP25 are the main components of a protein complex involved in the docking and/or fusion of synaptic vesicles with the presynaptic membrane. This gene is thought to participate in neurotransmitter release at a step between docking and fusion. The protein forms a stable complex with syntaxin, synaptosomal-associated protein, 25 kD, and synaptotagmin. It also forms a distinct complex with synaptophysin. It is a likely candidate gene for familial infantile myasthenia (FIMG) because of its map location and because it encodes a synaptic vesicle protein of the type that has been implicated in the pathogenesis of FIMG.

Target: Vesicle-Associated Membrane Protein 2 (VAMP2)

Clonality: Polyclonal

Reactivity: Human, Mouse, Rat

Tested Applications: IHC

Datasheet

Version: 4.0.0
Revision date: 31 Aug 2025



Host: Rabbit

Recommended dilutions: IHC-P: 1/50 - 1/100. Not tested in IHC-F. Optimal dilutions/concentrations should be determined by the end user.

Conjugation: Unconjugated

Immunogen: A synthetic peptide corresponding to human VAMP2

Isotype: IgG

Form: Liquid

Purification: Purified by affinity chromatography.

Storage: Aliquot and store at -20°C. Avoid repeated freeze/thaw cycles.

UniProt Primary AC: P63027 ([UniProt](#), [ExPASy](#))

Gene Symbol: VAMP2

GeneID: [6844](#)

NCBI Accession: NP_055047.2

KEGG: hsa:6844

String: [9606.ENSP00000314214](#)

Buffer: PBS, pH 7.3, containing 0.02% sodium azide, 50% glycerol.

Concentration: 1 mg/ml

Note: THIS PRODUCT IS FOR RESEARCH USE ONLY. NOT FOR USE IN DIAGNOSTIC, THERAPEUTIC OR COSMETIC PROCEDURES. NOT FOR HUMAN OR ANIMAL CONSUMPTION.