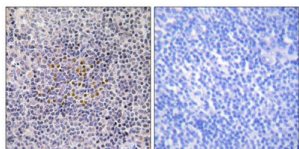
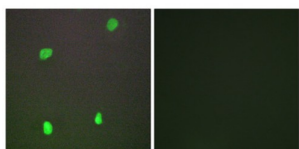


X-Ray Repair Cross Complementing 3 (XRCC3) Antibody

Catalogue No.: abx014063



Immunohistochemistry analysis of paraffin-embedded human tonsil tissue using XRCC3 antibody.



Immunofluorescence analysis of COS-7 cells, using XRCC3 antibody.

Rabbit polyclonal antibody against XRCC3 protein. Immunogen region is Internal.

Target: X-Ray Repair Cross Complementing 3 (XRCC3)

Clonality: Polyclonal

Reactivity: Human

Tested Applications: ELISA, IHC, IF/ICC

Host: Rabbit

Recommended dilutions: IHC: 1/50 - 1/100, IF/ICC: 1/100 - 1/500, ELISA: 1/20000. Optimal dilutions/concentrations should be determined by the end user.

Conjugation: Unconjugated

Immunogen: The antiserum was produced against synthesized peptide derived from internal of human XRCC3.

Isotype: IgG

Form: Liquid

Purification: Purified from rabbit antiserum by affinity chromatography using epitope-specific immunogen.

Datasheet

Version: 2.0.0

Revision date: 30 Aug 2025



Storage:	Aliquot and store at -20°C. Avoid repeated freeze/thaw cycles.
UniProt Primary AC:	O43542 (UniProt , ExPASy)
KEGG:	hsa:7517
String:	9606.ENSP00000451974
Sequence:	CQLHQQKERFPTQHQ
Buffer:	PBS (without Mg ²⁺ and Ca ²⁺), pH 7.4, 150 mM NaCl, 0.02% sodium azide, 50% glycerol.
Concentration:	1 mg/ml
Note:	THIS PRODUCT IS FOR RESEARCH USE ONLY. NOT FOR USE IN DIAGNOSTIC, THERAPEUTIC OR COSMETIC PROCEDURES. NOT FOR HUMAN OR ANIMAL CONSUMPTION.

For Reference Only