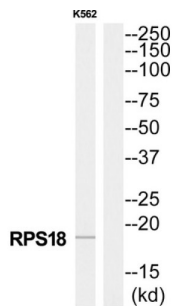


Ribosomal Protein S18 (RPS18) Antibody

Catalogue No.: abx014095



Western blot analysis of extracts from K562 cells, using RPS18 antibody. The lane on the right is treated with the synthetic peptide.

Rabbit polyclonal antibody against RPS18 protein. Immunogen region is Internal.

Target:	Ribosomal Protein S18 (RPS18)
Clonality:	Polyclonal
Reactivity:	Human, Mouse, Rat
Tested Applications:	ELISA, WB
Host:	Rabbit
Recommended dilutions:	ELISA: 1/20000, WB: 1/500 - 1/3000. Optimal dilutions/concentrations should be determined by the end user.
Conjugation:	Unconjugated
Immunogen:	The antiserum was produced against synthesized peptide derived from Internal of human RPS18.
Isotype:	IgG
Form:	Liquid
Purification:	Purified from rabbit antiserum by affinity chromatography using epitope-specific immunogen.
Storage:	Aliquot and store at -20°C. Avoid repeated freeze/thaw cycles.
UniProt Primary AC:	P62269 (UniProt , ExPASy)
KEGG:	hsa:6222
String:	9606.ENSP00000393241

Datasheet

Version: 3.0.0
Revision date: 24 Jul 2025



Buffer: PBS (without Mg^{2+} and Ca^{2+}), pH 7.4, 150 mM NaCl, 0.02% sodium azide, 50% glycerol.

Concentration: 1 mg/ml

Note: THIS PRODUCT IS FOR RESEARCH USE ONLY. NOT FOR USE IN DIAGNOSTIC, THERAPEUTIC OR COSMETIC PROCEDURES. NOT FOR HUMAN OR ANIMAL CONSUMPTION.

For Reference Only