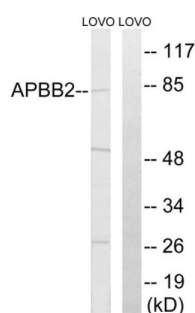
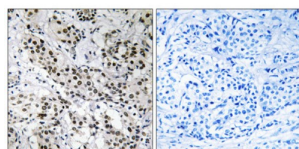


# Amyloid Beta Precursor Protein Binding Protein B2 (APBB2) Antibody

Catalogue No.: abx014181



Western blot analysis of extracts from LOVO cells, using APBB2 antibody.



Immunohistochemistry analysis of paraffin-embedded human breast carcinoma tissue using APBB2 antibody.

Rabbit polyclonal antibody against APBB2 protein. Immunogen region is Internal.

**Target:** Amyloid Beta Precursor Protein Binding Protein B2 (APBB2)

**Clonality:** Polyclonal

**Reactivity:** Human, Mouse

**Tested Applications:** ELISA, WB, IHC

**Host:** Rabbit

**Recommended dilutions:** WB: 1/500 - 1/3000, IHC: 1/50 - 1/100, ELISA: 1/40000. Optimal dilutions/concentrations should be determined by the end user.

**Conjugation:** Unconjugated

**Immunogen:** The antiserum was produced against synthesized peptide derived from internal of human APBB2.

**Isotype:** IgG

**Form:** Liquid

**Purification:** Purified from rabbit antiserum by affinity chromatography using epitope-specific immunogen.

# Datasheet

Version: 4.0.0

Revision date: 21 Jun 2025



<b>Storage:</b>	Aliquot and store at -20°C. Avoid repeated freeze/thaw cycles.
<b>UniProt Primary AC:</b>	Q92870 ( <a href="#">UniProt</a> , <a href="#">ExPASy</a> )
<b>KEGG:</b>	hsa:323
<b>String:</b>	<a href="#">9606.ENSP00000427211</a>
<b>Sequence:</b>	CYVARDKDTRILK
<b>Buffer:</b>	PBS (without $Mg^{2+}$ and $Ca^{2+}$ ), pH 7.4, 150 mM NaCl, 0.02% sodium azide, 50% glycerol.
<b>Concentration:</b>	1 mg/ml
<b>Note:</b>	THIS PRODUCT IS FOR RESEARCH USE ONLY. NOT FOR USE IN DIAGNOSTIC, THERAPEUTIC OR COSMETIC PROCEDURES. NOT FOR HUMAN OR ANIMAL CONSUMPTION.

For Reference Only