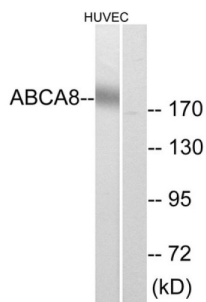


## ATP Binding Cassette Subfamily A Member 8 (ABCA8) Antibody

Catalogue No.: abx014228



Western blot analysis of extracts from HUVEC cells, using ABCA8 antibody.

Rabbit polyclonal antibody against ABCA8 protein. Immunogen region is Internal.

<b>Target:</b>	ATP Binding Cassette Subfamily A Member 8 (ABCA8)
<b>Clonality:</b>	Polyclonal
<b>Reactivity:</b>	Human, Mouse
<b>Tested Applications:</b>	ELISA, WB
<b>Host:</b>	Rabbit
<b>Recommended dilutions:</b>	WB: 1/500 - 1/3000, ELISA: 1/40000. Optimal dilutions/concentrations should be determined by the end user.
<b>Conjugation:</b>	Unconjugated
<b>Immunogen:</b>	The antiserum was produced against synthesized peptide derived from internal of human ABCA8.
<b>Isotype:</b>	IgG
<b>Form:</b>	Liquid
<b>Purification:</b>	Purified from rabbit antiserum by affinity chromatography using epitope-specific immunogen.
<b>Storage:</b>	Aliquot and store at -20°C. Avoid repeated freeze/thaw cycles.
<b>UniProt Primary AC:</b>	O94911 ( <a href="#">UniProt</a> , <a href="#">ExPASy</a> )
<b>KEGG:</b>	hsa:10351
<b>String:</b>	<a href="#">9606.ENSP00000467271</a>

# Datasheet

Version: 4.0.0

Revision date: 17 Jun 2025



**Buffer:** PBS (without  $Mg^{2+}$  and  $Ca^{2+}$ ), pH 7.4, 150 mM NaCl, 0.02% sodium azide, 50% glycerol.

**Concentration:** 1 mg/ml

**Note:** THIS PRODUCT IS FOR RESEARCH USE ONLY. NOT FOR USE IN DIAGNOSTIC, THERAPEUTIC OR COSMETIC PROCEDURES. NOT FOR HUMAN OR ANIMAL CONSUMPTION.

For Reference Only