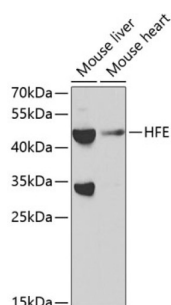


## Hereditary Hemochromatosis Protein (HFE) Antibody

Catalogue No.: abx001186



Western blot analysis of various lysates using HFE Antibody at 1/1000 dilution. Secondary antibody: HRP-conjugated Goat anti-Rabbit IgG (H+L) at 1/10000 dilution. Lysates/proteins: 25 µg per lane. Blocking buffer: 3% nonfat dry milk in TBST.

HFE Antibody is a Rabbit Polyclonal antibody against HFE. The protein encoded by this gene is a membrane protein that is similar to MHC class I-type proteins and associates with beta2-microglobulin (beta2M). It is thought that this protein functions to regulate iron absorption by regulating the interaction of the transferrin receptor with transferrin. The iron storage disorder, hereditary haemochromatosis, is a recessive genetic disorder that results from defects in this gene. At least nine alternatively spliced variants have been described for this gene. Additional variants have been found but their full-length nature has not been determined. [provided by RefSeq, Jul 2008].

<b>Target:</b>	Hereditary Hemochromatosis Protein (HFE)
<b>Clonality:</b>	Polyclonal
<b>Reactivity:</b>	Human, Mouse
<b>Tested Applications:</b>	ELISA, WB
<b>Host:</b>	Rabbit
<b>Recommended dilutions:</b>	ELISA: 1 µg/ml, WB: 1/500 - 1/2000. Optimal dilutions/concentrations should be determined by the end user.
<b>Conjugation:</b>	Unconjugated
<b>Immunogen:</b>	Recombinant fusion protein containing a sequence corresponding to amino acids 80-306 of human HFE.
<b>Isotype:</b>	IgG
<b>Form:</b>	Liquid
<b>Purification:</b>	Purified by affinity chromatography.
<b>Storage:</b>	Aliquot and store at -20°C. Avoid repeated freeze/thaw cycles.
<b>UniProt Primary AC:</b>	Q30201 ( <a href="#">UniProt</a> , <a href="#">ExPASy</a> )

# Datasheet

Version: 4.0.0

Revision date: 05 Mar 2025



**Gene Symbol:** HFE

**GeneID:** [3077](#)

**NCBI Accession:** NP\_000401.1

**KEGG:** hsa:3077

**String:** [9606.ENSP00000417404](#)

**Molecular Weight:** Calculated MW: 40 kDa  
Observed MW: 50 kDa

**Buffer:** PBS, pH 7.3, containing 0.02% sodium azide, 50% glycerol.

**Concentration:** > 0.2 mg/ml

**Note:** THIS PRODUCT IS FOR RESEARCH USE ONLY. NOT FOR USE IN DIAGNOSTIC, THERAPEUTIC OR COSMETIC PROCEDURES. NOT FOR HUMAN OR ANIMAL CONSUMPTION.

For Reference Only