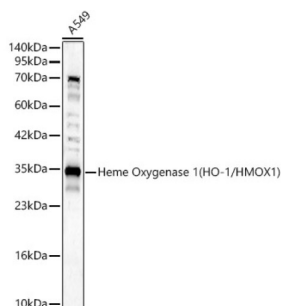
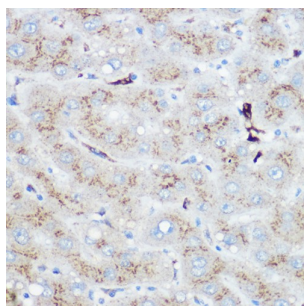


Heme Oxygenase 1 (HMOX1) Antibody

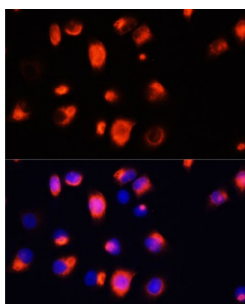
Catalogue No.: abx001194



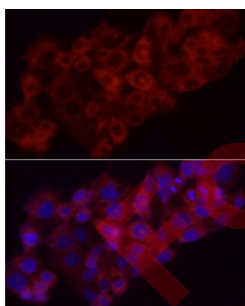
Western blot analysis of lysates from A549 cells, using Heme Oxygenase 1 (HO-1/HMOX1) Antibody at 1/2000 dilution. Secondary antibody: HRP-conjugated Goat anti-Rabbit IgG (H+L) at 1/10000 dilution. Lysates/proteins: 25 µg per lane. Blocking buffer: 3% nonfat dry milk in TBST. Exposure time: 30s.



Western blot analysis of lysates from NIH/3T3 cells using Heme Oxygenase 1 (HO-1/HMOX1) Antibody at 1/1000 dilution incubated overnight at 4 °C. Secondary antibody: HRP-conjugated Goat anti-Rabbit IgG (H+L) at 1/10000 dilution. Lysates/proteins: 25 µg per lane. Blocking buffer: 3% nonfat dry milk in TBST. Exposure time: 180s.



Western blot analysis of various lysates using Heme Oxygenase 1 (HO-1/HMOX1) Antibody at 1/1000 dilution incubated overnight at 4 °C. Secondary antibody: HRP-conjugated Goat anti-Rabbit IgG (H+L) at 1/10000 dilution. Lysates/proteins: 25 µg per lane. Blocking buffer: 3% nonfat dry milk in TBST. Exposure time: 10s.



Immunohistochemistry analysis of paraffin-embedded Human liver using Heme Oxygenase 1 (HO-1/HMOX1) Antibody at dilution of 1/100 (40x lens). High pressure antigen retrieval performed in 0.01 M Citrate buffer (pH 6.0) prior to IHC staining.

Heme Oxygenase 1 Antibody is a Rabbit Polyclonal antibody against Heme Oxygenase 1. Heme oxygenase, an essential enzyme in heme catabolism, cleaves heme to form biliverdin, which is subsequently converted to bilirubin by biliverdin reductase, and carbon monoxide, a putative neurotransmitter. Heme oxygenase activity is induced by its substrate heme and by various nonheme substances. Heme oxygenase occurs as 2 isozymes, an inducible heme oxygenase-1 and a constitutive heme oxygenase-2. HMOX1 and HMOX2 belong to the heme oxygenase family.

Target:

Heme Oxygenase 1 (HMOX1)

Datasheet

Version: 4.0.0
Revision date: 13 Oct 2025



Clonality:	Polyclonal
Reactivity:	Human, Mouse, Rat
Tested Applications:	ELISA, WB, IHC, IF/ICC
Host:	Rabbit
Recommended dilutions:	ELISA: 1 µg/ml, WB: 1/1000 - 1/5000, IHC-P: 1/50 - 1/200, IF/ICC: 1/50 - 1/200. Not tested in IHC-F. Optimal dilutions/concentrations should be determined by the end user.
Conjugation:	Unconjugated
Immunogen:	A synthetic peptide corresponding to a sequence within amino acids 1-288 of human Heme Oxygenase 1 (HO-1/HMOX1).
Isotype:	IgG
Form:	Liquid
Purification:	Purified by affinity chromatography.
Storage:	Aliquot and store at -20°C. Avoid repeated freeze/thaw cycles.
UniProt Primary AC:	P09601 (UniProt , ExPASy)
GeneID:	3162
NCBI Accession:	NP_002124.1
KEGG:	hsa:3162
String:	9606.ENSP00000216117
Enzyme Commission Number:	EC 1.14.14.18, EC 1.14.99.3
Molecular Weight:	Calculated MW: 33 kDa Observed MW: 33 kDa
Buffer:	PBS, pH 7.3, containing 0.09% sodium azide, 50% glycerol.
Concentration:	> 0.2 mg/ml
Note:	THIS PRODUCT IS FOR RESEARCH USE ONLY. NOT FOR USE IN DIAGNOSTIC, THERAPEUTIC OR COSMETIC PROCEDURES. NOT FOR HUMAN OR ANIMAL CONSUMPTION.