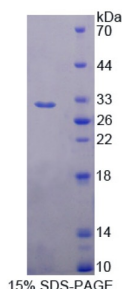


## Human Angiopoietin-Related Protein 5 (ANGPTL5) Protein

Catalogue No.: abx167866



SDS-PAGE analysis of recombinant Human Angiopoietin-Related Protein 5 (ANGPTL5) Protein.

Angiopoietin-Related Protein 5 is a recombinant Human protein expressed in *E. coli*.

**Target:** Angiopoietin-Related Protein 5 (ANGPTL5)

**Origin:** Human

**Expression:** Recombinant

**Tested Applications:** WB, SDS-PAGE

**Host:** *E. coli*

**Conjugation:** Unconjugated

**Form:** Lyophilized

**Purity:** > 95%

**Reconstitution:** To keep the original salt concentration, we recommend reconstituting to the original concentration prior to lyophilization (see Concentration) in ddH<sub>2</sub>O. If a lower concentration is required, dilute in 10 mM PBS, pH 7.4. If a higher concentration is required, the product can be reconstituted directly in 10 mM PBS, pH 7.4, though please note that this will change the overall salt concentration. The stock concentration should be between 0.1-1.0 mg/ml. Do not vortex.

**Storage:** Store at 2-8 °C for up to one month. Store at -80 °C for up to one year. Avoid repeated freeze/thaw cycles.

**UniProt Primary AC:** Q86XS5 ([UniProt](#), [ExPASy](#))

**KEGG:** hsa:253935

**String:** [9606.ENSP00000335255](#)

# Datasheet

Version: 3.0.0  
Revision date: 09 Apr 2025



**Molecular Weight:** Calculated MW: 31.3 kDa  
Observed MW (SDS-PAGE): 31 kDa

**Sequence Fragment:** Arg141-Tyr383

**Sequence:** RPVQSHGLDC TDIKDTIGSV TKTPSGLYII HPEGSSYPFE VMCDMDYRGG GRTVIQKRID  
GIIDFQRLWC DYLDGFGDLL GEFWLGLKKI FYIVNQKNTS FMLYVALESE DDTLAYASYD  
NFWLEDETRF FKMHLGRYSG NAGDAFRGLK KEDNQNAMPF STSDVDNDGC RPACLVNGQS  
VKSCSHLHNK TGWWFNECGL ANLNGIHHFS GKLLATGIQW GTWTKNNSPV KIKSVSMKIR RMY

**Tag:** N-terminal His tag

**Buffer:** Prior to lyophilization: PBS, pH 7.4, containing 0.01% Sarcosyl, 5% Trehalose.

**Activity:** Not tested

**Concentration:** Prior to lyophilization: 1000 µg/ml

**Note:** THIS PRODUCT IS FOR RESEARCH USE ONLY. NOT FOR USE IN DIAGNOSTIC, THERAPEUTIC OR COSMETIC PROCEDURES. NOT FOR HUMAN OR ANIMAL CONSUMPTION.

For Reference Only