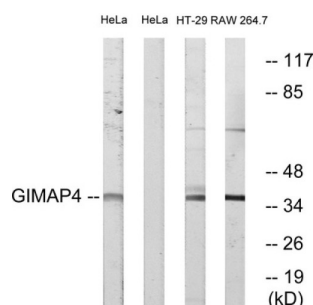


GTPase IMAP Family Member 4 (GIMAP4) Antibody

Catalogue No.: abx014509



Western blot analysis of extracts from HeLa cells, HT-29 cells and RAW264.7 cells, using GIMAP4 antibody.

Rabbit polyclonal antibody against GIMAP4 protein. Immunogen region is Internal.

Target:	GTPase IMAP Family Member 4 (GIMAP4)
Clonality:	Polyclonal
Reactivity:	Human
Tested Applications:	ELISA, WB
Host:	Rabbit
Recommended dilutions:	WB: 1/500 - 1/3000, ELISA: 1/5000. Optimal dilutions/concentrations should be determined by the end user.
Conjugation:	Unconjugated
Immunogen:	The antiserum was produced against synthesized peptide derived from internal of human GIMAP4.
Isotype:	IgG
Form:	Liquid
Purification:	Purified from rabbit antiserum by affinity chromatography using epitope-specific immunogen.
Storage:	Aliquot and store at -20°C. Avoid repeated freeze/thaw cycles.
UniProt Primary AC:	Q9NUV9 (UniProt , ExPASy)
String:	9606.ENSP00000255945
Buffer:	PBS (without Mg^{2+} and Ca^{2+}), pH 7.4, 150 mM NaCl, 0.02% sodium azide, 50% glycerol.

Datasheet

Version: 3.0.0

Revision date: 21 Jun 2025



Concentration: 1 mg/ml

Note: THIS PRODUCT IS FOR RESEARCH USE ONLY. NOT FOR USE IN DIAGNOSTIC, THERAPEUTIC OR COSMETIC PROCEDURES. NOT FOR HUMAN OR ANIMAL CONSUMPTION.

For Reference Only