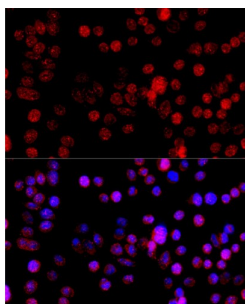


Cytochrome P450 1B1 (CYP1B1) Antibody

Catalogue No.: abx001210



Immunofluorescence analysis of HeLa cells using CYP1B1 Antibody (1/100 dilution, 40x lens).
Blue: DAPI for nuclear staining.

CYP1B1 Antibody is a Rabbit Polyclonal antibody against CYP1B1. Cytochrome P450 1B1 (CYP1B1) is a key enzyme involved in the production of potentially carcinogenic estrogen metabolites and the activation of environmental carcinogens and is the predominant member of the CYP1 family expressed in normal breast tissue and breast cancer. Estrogen has been proposed to trigger breast cancer development via an initiating mechanism involving its metabolite, catechol estrogen (CE). CYP1B1 catalyzes the conversion of 17-beta-estradiol to the catechol estrogen metabolites 2-OH-E2 and 4-OH-E2 which have both been postulated to be involved in mammary carcinogenesis. Genetic polymorphisms in CYP1B1 may play an important role in human prostate carcinogenesis as well. Polymorphism of the CYP1B1 gene at codon 432 (Val-->Leu) is associated with a change in catalytic function.

| | |
|-------------------------------|--|
| Target: | Cytochrome P450 1B1 (CYP1B1) |
| Clonality: | Polyclonal |
| Reactivity: | Human |
| Tested Applications: | IF/ICC |
| Host: | Rabbit |
| Recommended dilutions: | IF/ICC: 1/50 - 1/200. Optimal dilutions/concentrations should be determined by the end user. |
| Conjugation: | Unconjugated |
| Immunogen: | Recombinant fusion protein corresponding to human CYP1B1 |
| Isotype: | IgG |
| Form: | Liquid |
| Purification: | Purified by affinity chromatography. |
| Storage: | Aliquot and store at -20°C. Avoid repeated freeze/thaw cycles. |

Datasheet

Version: 4.0.0
Revision date: 16 Jun 2025



UniProt Primary AC: Q16678 ([UniProt](#), [ExPASy](#))

Gene Symbol: CYP1B1

GeneID: [1545](#)

NCBI Accession: NP_000095.2

KEGG: hsa:1545

String: [9606.ENSP00000478561](#)

Buffer: PBS, pH 7.3, containing 0.02% sodium azide, 50% glycerol.

Concentration: 1 mg/ml

Note: THIS PRODUCT IS FOR RESEARCH USE ONLY. NOT FOR USE IN DIAGNOSTIC, THERAPEUTIC OR COSMETIC PROCEDURES. NOT FOR HUMAN OR ANIMAL CONSUMPTION.

For Reference Only