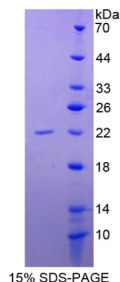


Human Bcl2 Associated Death Promoter (BAD) Protein

Catalogue No.: abx166681



SDS-PAGE analysis of Bcl2 Associated Death Promoter Protein.

Bcl2 Associated Death Promoter Protein is a recombinant Human protein expressed in *E. coli*.

Target:	Bcl2 Associated Death Promoter (BAD)
Origin:	Human
Expression:	Recombinant
Tested Applications:	WB, SDS-PAGE
Host:	<i>E. coli</i>
Conjugation:	Unconjugated
Form:	Lyophilized
Activity:	Not tested
Purity:	> 95%
Reconstitution:	To keep the original salt concentration, we recommend reconstituting to the original concentration prior to lyophilization (see Concentration) in ddH ₂ O. If a lower concentration is required, dilute in PBS, pH 7.4. If a higher concentration is required, the product can be reconstituted directly in PBS, pH 7.4, though please note that this will change the overall salt concentration. The stock concentration should be between 0.1-1.0 mg/ml. Do not vortex.
Storage:	Store at 2-8°C for up to one month. For long-term storage, store at -80°C. Avoid repeated freeze/thaw cycles.
UniProt Primary AC:	Q92934 (UniProt , ExPASy)
KEGG:	hsa:572

Datasheet

Version: 2.0.0

Revision date: 06 Oct 2025



String: [9606.ENSPO0000378040](#)

Molecular Weight: Calculated MW: 22.2 kDa

Sequence Fragment: Met1-Gln168

Tag: N-terminal His tag

Buffer: Prior to lyophilization: PBS, pH 7.4, containing 0.01% Sarcosyl, 1 mM DTT, 5% Trehalose and Proclin-300.

Concentration: Prior to lyophilization: 200 µg/ml

Note: THIS PRODUCT IS FOR RESEARCH USE ONLY. NOT FOR USE IN DIAGNOSTIC, THERAPEUTIC OR COSMETIC PROCEDURES. NOT FOR HUMAN OR ANIMAL CONSUMPTION.

For Reference Only