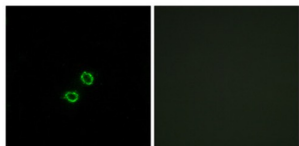


# Killer Cell Immunoglobulin Like Receptor, Two Ig Domains And Long Cytoplasmic Tail 5B (KIR2DL5B) Antibody

Catalogue No.: abx014545



Immunofluorescence analysis of A549 cells, using KIR2DL5B antibody.

Rabbit polyclonal antibody against KIR2DL5B protein. Immunogen region is Internal.

<b>Target:</b>	Killer Cell Immunoglobulin Like Receptor, Two Ig Domains And Long Cytoplasmic Tail 5B (KIR2DL5B)
<b>Clonality:</b>	Polyclonal
<b>Reactivity:</b>	Human
<b>Tested Applications:</b>	ELISA, IF/ICC
<b>Host:</b>	Rabbit
<b>Recommended dilutions:</b>	IF/ICC: 1/100 - 1/500, ELISA: 1/10000. Optimal dilutions/concentrations should be determined by the end user.
<b>Conjugation:</b>	Unconjugated
<b>Immunogen:</b>	The antiserum was produced against synthesized peptide derived from internal of human KIR2DL5B.
<b>Isotype:</b>	IgG
<b>Form:</b>	Liquid
<b>Purification:</b>	Purified from rabbit antiserum by affinity chromatography using epitope-specific immunogen.
<b>Storage:</b>	Aliquot and store at -20°C. Avoid repeated freeze/thaw cycles.
<b>UniProt Primary AC:</b>	Q8NHH3 ( <a href="#">UniProt</a> , <a href="#">ExPASy</a> )
<b>Buffer:</b>	PBS (without Mg <sup>2+</sup> and Ca <sup>2+</sup> ), pH 7.4, 150 mM NaCl, 0.02% sodium azide, 50% glycerol.

# Datasheet

Version: 4.0.0

Revision date: 04 Oct 2025



**Concentration:** 1 mg/ml

**Note:** THIS PRODUCT IS FOR RESEARCH USE ONLY. NOT FOR USE IN DIAGNOSTIC, THERAPEUTIC OR COSMETIC PROCEDURES. NOT FOR HUMAN OR ANIMAL CONSUMPTION.

For Reference Only