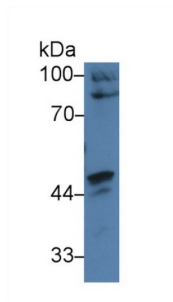
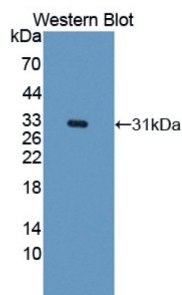


Caspase Recruitment Domain Family, Member 9 (CARD9) Antibody

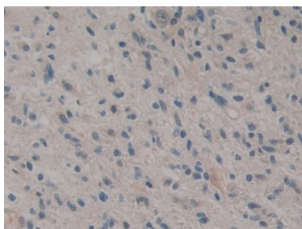
Catalogue No.: abx129064



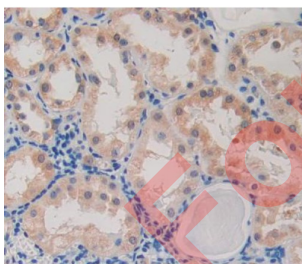
Western blot analysis of Human HepG2 cell lysate, using Human CARD9 Antibody (3 µg/ml) and HRP-conjugated Goat Anti-Rabbit antibody ([abx400043](#), 0.2 µg/ml).



Western blot analysis of the recombinant protein.



IHC-P analysis of Human Glioma Tissue, with DAB staining.



IHC-P analysis of Kidney tissue, with DAB staining.

Caspase Recruitment Domain Family, Member 9 Antibody is a Rabbit Polyclonal against Caspase Recruitment Domain Family, Member 9.

Target: Caspase Recruitment Domain Family, Member 9 (CARD9)

Clonality: Polyclonal

Datasheet

Version: 3.0.0

Revision date: 22 Jun 2025



Reactivity: Human

Tested Applications: WB, IHC, IF/ICC

Host: Rabbit

Recommended dilutions: WB: 0.01-2 µg/ml, IHC: 5-20 µg/ml, IF/ICC: 5-20 µg/ml. Optimal dilutions/concentrations should be determined by the end user.

Conjugation: Unconjugated

Immunogen: CARD9 (Asp26-Leu283)

Form: Liquid

Purification: Purified by antigen-specific affinity chromatography, followed by Protein A affinity chromatography.

Storage: Aliquot and store at -20°C. Avoid repeated freeze/thaw cycles.

Buffer: 0.01 M PBS, pH 7.4, containing 0.05% Proclin-300, 50% glycerol.

Concentration: 1 mg/ml

Note: THIS PRODUCT IS FOR RESEARCH USE ONLY. NOT FOR USE IN DIAGNOSTIC, THERAPEUTIC OR COSMETIC PROCEDURES. NOT FOR HUMAN OR ANIMAL CONSUMPTION.