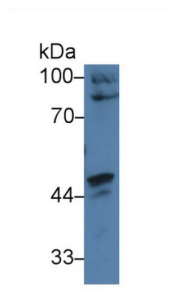
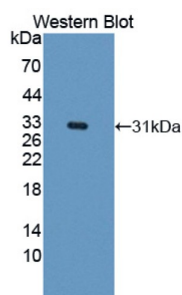


## Caspase Recruitment Domain Family, Member 9 (CARD9) Antibody

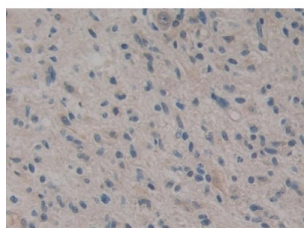
Catalogue No.: abx129064



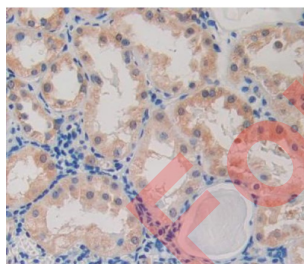
Western blot analysis of Human HepG2 cell lysate, using Human CARD9 Antibody (3 µg/ml) and HRP-conjugated Goat Anti-Rabbit antibody ([abx400043](#), 0.2 µg/ml).



Western blot analysis of the recombinant protein.



IHC-P analysis of Human Glioma Tissue, with DAB staining.



IHC-P analysis of Kidney tissue, with DAB staining.

Caspase Recruitment Domain Family, Member 9 Antibody is a Rabbit Polyclonal against Caspase Recruitment Domain Family, Member 9.

**Target:** Caspase Recruitment Domain Family, Member 9 (CARD9)

**Clonality:** Polyclonal

# Datasheet

Version: 3.0.0  
Revision date: 22 Jun 2025



<b>Reactivity:</b>	Human
<b>Tested Applications:</b>	WB, IHC, IF/ICC
<b>Host:</b>	Rabbit
<b>Recommended dilutions:</b>	WB: 0.01-2 µg/ml, IHC: 5-20 µg/ml, IF/ICC: 5-20 µg/ml. Optimal dilutions/concentrations should be determined by the end user.
<b>Conjugation:</b>	Unconjugated
<b>Immunogen:</b>	CARD9 (Asp26-Leu283)
<b>Form:</b>	Liquid
<b>Purification:</b>	Purified by antigen-specific affinity chromatography, followed by Protein A affinity chromatography.
<b>Storage:</b>	Aliquot and store at -20°C. Avoid repeated freeze/thaw cycles.
<b>Buffer:</b>	0.01 M PBS, pH 7.4, containing 0.05% Proclin-300, 50% glycerol.
<b>Concentration:</b>	1 mg/ml
<b>Note:</b>	THIS PRODUCT IS FOR RESEARCH USE ONLY. NOT FOR USE IN DIAGNOSTIC, THERAPEUTIC OR COSMETIC PROCEDURES. NOT FOR HUMAN OR ANIMAL CONSUMPTION.