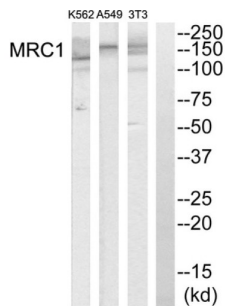


## Macrophage Mannose Receptor 1 (MRC1) Antibody

Catalogue No.: abx014566



Western blot analysis of extracts from K562 cells, A549 cells and NIH-3T3 cells, using MRC1 antibody. The lane on the extreme right was treated with synthetic peptide.

Rabbit polyclonal antibody against MRC1 protein. Immunogen region is Internal.

<b>Target:</b>	Macrophage Mannose Receptor 1 (MRC1)
<b>Clonality:</b>	Polyclonal
<b>Reactivity:</b>	Human, Mouse, Rat
<b>Tested Applications:</b>	ELISA, WB
<b>Host:</b>	Rabbit
<b>Recommended dilutions:</b>	ELISA: 1/20000, WB: 1/500 - 1/3000. Optimal dilutions/concentrations should be determined by the end user.
<b>Conjugation:</b>	Unconjugated
<b>Immunogen:</b>	The antiserum was produced against synthesized peptide derived from internal of human MRC1.
<b>Isotype:</b>	IgG
<b>Form:</b>	Liquid
<b>Purification:</b>	Purified from rabbit antiserum by affinity chromatography using epitope-specific immunogen.
<b>Storage:</b>	Aliquot and store at -20°C. Avoid repeated freeze/thaw cycles.
<b>UniProt Primary AC:</b>	P22897 ( <a href="#">UniProt</a> , <a href="#">ExPASy</a> )
<b>KEGG:</b>	hsa:4360
<b>String:</b>	<a href="#">9606.ENSP00000455897</a>

# Datasheet

Version: 4.0.0

Revision date: 17 Jul 2025



<b>Buffer:</b>	PBS (without $Mg^{2+}$ and $Ca^{2+}$ ), pH 7.4, 150 mM NaCl, 0.02% sodium azide, 50% glycerol.
<b>Specificity:</b>	Detects endogenous levels of total MRC1 protein.
<b>Concentration:</b>	1 mg/ml
<b>Note:</b>	THIS PRODUCT IS FOR RESEARCH USE ONLY. NOT FOR USE IN DIAGNOSTIC, THERAPEUTIC OR COSMETIC PROCEDURES. NOT FOR HUMAN OR ANIMAL CONSUMPTION.

For Reference Only