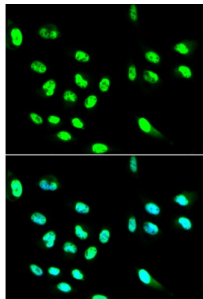


Fc Fragment of IgG, Low Affinity Ila, Receptor / CD32 (FCGR2A) Antibody

Catalogue No.: abx001215



Immunofluorescence analysis of HepG2 cells using FCGR2A Antibody

FCGR2A Antibody is a Rabbit Polyclonal antibody against FCGR2A. This gene encodes one member of a family of immunoglobulin Fc receptor genes found on the surface of many immune response cells. The protein encoded by this gene is a cell surface receptor found on phagocytic cells such as macrophages and neutrophils, and is involved in the process of phagocytosis and clearing of immune complexes. Alternative splicing results in multiple transcript variants.

Target:	Fc Fragment of IgG, Low Affinity Ila, Receptor / CD32 (FCGR2A)
Clonality:	Polyclonal
Reactivity:	Human, Mouse
Tested Applications:	IF/ICC
Host:	Rabbit
Recommended dilutions:	IF/ICC: 1/50 - 1/200. Optimal dilutions/concentrations should be determined by the end user.
Conjugation:	Unconjugated
Immunogen:	Recombinant fusion protein corresponding to human FCGR2A
Isotype:	IgG
Form:	Liquid
Purification:	Purified by affinity chromatography.
Storage:	Aliquot and store at -20°C. Avoid repeated freeze/thaw cycles.
UniProt Primary AC:	P12318 (UniProt , ExPASy)

Datasheet

Version: 3.0.0

Revision date: 14 Jun 2025



Gene Symbol: FCGR2A

GeneID: [2212](#)

NCBI Accession: NP_001129691.1

Buffer: PBS, pH 7.3, containing 0.02% sodium azide, 50% glycerol.

Concentration: 1 mg/ml

Note: THIS PRODUCT IS FOR RESEARCH USE ONLY. NOT FOR USE IN DIAGNOSTIC, THERAPEUTIC OR COSMETIC PROCEDURES. NOT FOR HUMAN OR ANIMAL CONSUMPTION.

For Reference Only