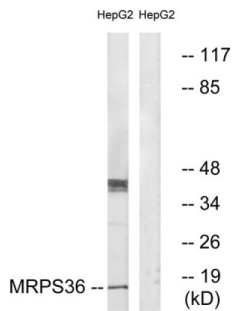
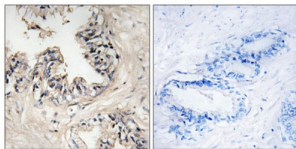


Mitochondrial Ribosomal Protein S36 (MRPS36) Antibody

Catalogue No.: abx014591



Western blot analysis of extracts from HepG2 cells, using MRPS36 antibody.



Immunohistochemistry analysis of paraffin-embedded human breast carcinoma tissue using MRPS36 antibody.

Rabbit polyclonal antibody against MRPS36 protein. Immunogen region is N-terminal.

Target:	Mitochondrial Ribosomal Protein S36 (MRPS36)
Clonality:	Polyclonal
Reactivity:	Human
Tested Applications:	ELISA, WB, IHC
Host:	Rabbit
Recommended dilutions:	WB: 1/500 - 1/3000, IHC: 1/50 - 1/100, ELISA: 1/10000. Optimal dilutions/concentrations should be determined by the end user.
Conjugation:	Unconjugated
Immunogen:	The antiserum was produced against synthesized peptide derived from N-terminal of human MRPS36.
Isotype:	IgG
Form:	Liquid
Purification:	Purified from rabbit antiserum by affinity chromatography using epitope-specific immunogen.

Datasheet

Version: 4.0.0
Revision date: 03 Jul 2025



Storage: Aliquot and store at -20°C. Avoid repeated freeze/thaw cycles.

UniProt Primary AC: P82909 ([UniProt](#), [ExPASy](#))

KEGG: hsa:92259

String: [9606.ENSP00000256441](#)

Sequence: CIRFPDRRDNPKNV

Buffer: PBS (without Mg²⁺ and Ca²⁺), pH 7.4, 150 mM NaCl, 0.02% sodium azide, 50% glycerol.

Concentration: 1 mg/ml

Note: THIS PRODUCT IS FOR RESEARCH USE ONLY. NOT FOR USE IN DIAGNOSTIC, THERAPEUTIC OR COSMETIC PROCEDURES. NOT FOR HUMAN OR ANIMAL CONSUMPTION.

For Reference Only