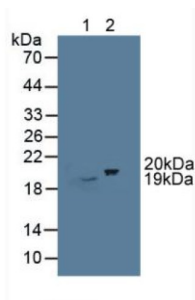
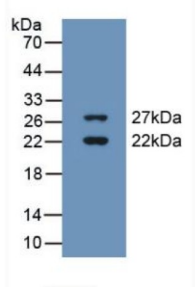


Cold Inducible RNA Binding Protein (CIRBP) Antibody

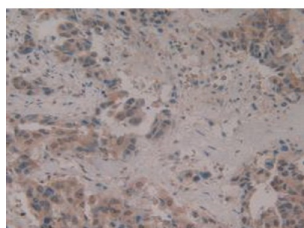
Catalogue No.: abx128874



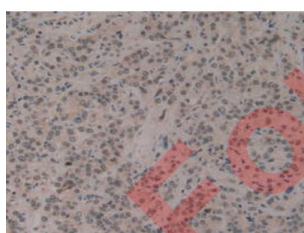
Western blot analysis of (1) Mouse Brain Tissue and (2) Porcine Brain Tissue.



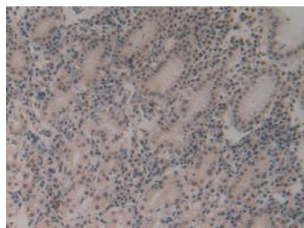
Western blot analysis of recombinant Human CIRBP.



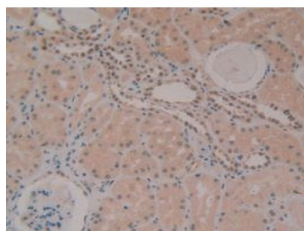
IHC-P analysis of Human Breast Cancer Tissue, with DAB staining.



IHC-P analysis of Human Prostate Gland Cancer Tissue, with DAB staining.



IHC-P analysis of Human Stomach Tissue, with DAB staining.



IHC-P analysis of Human Kidney Tissue, with DAB staining.

Cold Inducible RNA Binding Protein Antibody is a Rabbit Polyclonal against Cold Inducible RNA Binding Protein.

Target:	Cold Inducible RNA Binding Protein (CIRBP)
Clonality:	Polyclonal
Reactivity:	Human
Tested Applications:	WB, IHC, IF/ICC
Host:	Rabbit
Recommended dilutions:	WB: 0.01-5 µg/ml, IHC: 5-20 µg/ml, IF/ICC: 5-20 µg/ml. Optimal dilutions/concentrations should be determined by the end user.
Conjugation:	Unconjugated
Immunogen:	CIRBP (Met1-Glu172)
Form:	Liquid
Purification:	Purified by antigen-specific affinity chromatography, followed by Protein A affinity chromatography.
Storage:	Aliquot and store at -20°C. Avoid repeated freeze/thaw cycles.
UniProt Primary AC:	Q14011 (UniProt , ExPASy)
KEGG:	hsa:1153
String:	9606.ENSP00000466897
Buffer:	0.01 M PBS, pH 7.4, containing 0.05% Proclin-300, 50% glycerol.
Note:	THIS PRODUCT IS FOR RESEARCH USE ONLY. NOT FOR USE IN DIAGNOSTIC, THERAPEUTIC OR COSMETIC PROCEDURES. NOT FOR HUMAN OR ANIMAL CONSUMPTION.