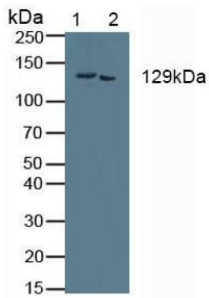
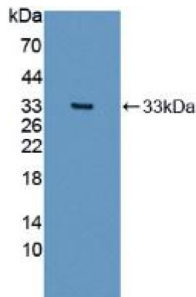


Collagen Alpha-2 I Chain (COL1A2) Antibody

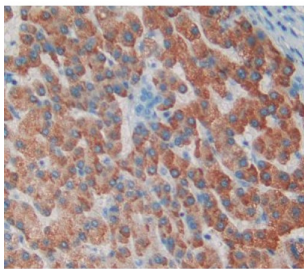
Catalogue No.:abx128403



Western blot analysis of (1) Mouse Kidney Tissue and (2) Mouse Placenta Tissue.



Western blot analysis of recombinant Human COL1A2.



IHC-P analysis of Human Tissue, with DAB staining.

COL1A2 Antibody is a Rabbit Polyclonal against COL1A2.

Target: Collagen Alpha-2 I Chain (COL1A2)

Research Area: Metabolic Pathways, Bone Metabolism

Clonality: Polyclonal

Reactivity: Human

Tested Applications: WB, IHC, IF/ICC

Host: Rabbit

Recommended dilutions: WB: 1-5 µg/ml, IHC: 5-20 µg/ml, IF/ICC: 5-20 µg/ml. Optimal dilutions/concentrations should be determined by the end user.

Datasheet

Version: 3.0.0

Revision date: 12 Aug 2025



| | |
|----------------------------|--|
| Conjugation: | Unconjugated |
| Immunogen: | COL1A2 (Val1103-Lys1366) |
| Form: | Liquid |
| Purification: | Purified by antigen-specific affinity chromatography, followed by Protein A affinity chromatography. |
| Storage: | Aliquot and store at -20°C. Avoid repeated freeze/thaw cycles. |
| UniProt Primary AC: | P08123 (UniProt , ExPASy) |
| Gene Symbol: | COL1A2 |
| KEGG: | hsa:1278 |
| String: | 9606.ENSP00000297268 |
| Buffer: | 0.01 M PBS, pH 7.4, containing 0.05% Proclin-300, 50% glycerol. |
| Note: | THIS PRODUCT IS FOR RESEARCH USE ONLY. NOT FOR USE IN DIAGNOSTIC, THERAPEUTIC OR COSMETIC PROCEDURES. NOT FOR HUMAN OR ANIMAL CONSUMPTION. |