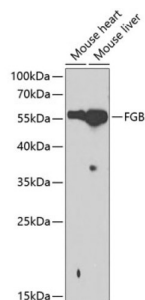


Fibrinogen Beta (FGB) Antibody

Catalogue No.: abx001220



Western blot analysis of extracts of various cell lines using FGB Antibody (1/1000 dilution).

FGB Antibody is a Rabbit Polyclonal antibody against FGB. The protein encoded by this gene is the beta component of fibrinogen, a blood-borne glycoprotein comprised of three pairs of nonidentical polypeptide chains. Following vascular injury, fibrinogen is cleaved by thrombin to form fibrin which is the most abundant component of blood clots. In addition, various cleavage products of fibrinogen and fibrin regulate cell adhesion and spreading, display vasoconstrictor and chemotactic activities, and are mitogens for several cell types. Mutations in this gene lead to several disorders, including afibrinogenemia, dysfibrinogenemia, hypodysfibrinogenemia and thrombotic tendency. [provided by RefSeq, Jul 2008].

Target: Fibrinogen Beta (FGB)

Clonality: Polyclonal

Reactivity: Human, Mouse, Rat

Tested Applications: WB

Host: Rabbit

Recommended dilutions: WB: 1/500 - 1/2000. Optimal dilutions/concentrations should be determined by the end user.

Conjugation: Unconjugated

Immunogen: Recombinant fusion protein corresponding to human FGB

Isotype: IgG

Form: Liquid

Purification: Purified by affinity chromatography.

Storage: Aliquot and store at -20°C. Avoid repeated freeze/thaw cycles.

UniProt Primary AC: P02675 ([UniProt](#), [ExPASy](#))

Datasheet

Version: 4.0.0

Revision date: 12 Oct 2025



Gene Symbol: FGB

GeneID: [2244](#)

NCBI Accession: NP_005132.2

KEGG: hsa:2244

String: [9606.ENSP00000306099](#)

Molecular Weight: Calculated MW: 55 kDa
Observed MW: 56 kDa

Buffer: PBS, pH 7.3, containing 0.02% sodium azide, 50% glycerol.

Concentration: 1 mg/ml

Note: THIS PRODUCT IS FOR RESEARCH USE ONLY. NOT FOR USE IN DIAGNOSTIC, THERAPEUTIC OR COSMETIC PROCEDURES. NOT FOR HUMAN OR ANIMAL CONSUMPTION.

For Reference Only