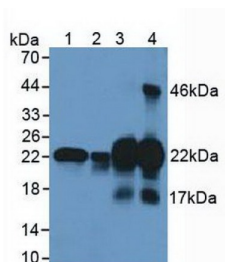
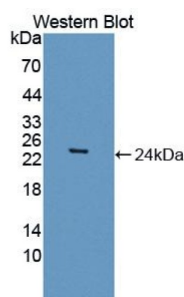


Cysteine And Glycine Rich Protein 1 (CSRP1) Antibody

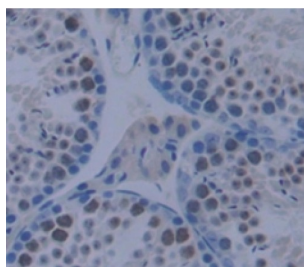
Catalogue No.: abx128241



Western blot analysis of (1) Human Lung Tissue, (2) Human HeLa cells, (3) Mouse Uterus Tissue and (4) Mouse Bladder Tissue.



Western blot analysis of recombinant Human CSRP1.



IHC-P analysis of testis tissue, with DAB staining.

Cysteine And Glycine Rich Protein 1 Antibody is a Rabbit Polyclonal against Cysteine And Glycine Rich Protein 1.

Target: Cysteine And Glycine Rich Protein 1 (CSRP1)

Clonality: Polyclonal

Reactivity: Human

Tested Applications: WB, IHC, IF/ICC

Host: Rabbit

Recommended dilutions: WB: 0.01-2 µg/ml, IHC: 5-20 µg/ml, IF/ICC: 5-20 µg/ml. Optimal dilutions/concentrations should be determined by the end user.

Conjugation: Unconjugated

Datasheet

Version: 4.0.0
Revision date: 13 Aug 2025



Immunogen:	CSRP1 (Met1-Glu193)
Form:	Liquid
Purification:	Purified by antigen-specific affinity chromatography, followed by Protein A affinity chromatography.
Storage:	Aliquot and store at -20°C. Avoid repeated freeze/thaw cycles.
UniProt Primary AC:	P21291 (UniProt , ExPASy)
KEGG:	hsa:1465
String:	9606.ENSP00000356275
Buffer:	0.01 M PBS, pH 7.4, containing 0.05% Proclin-300, 50% glycerol.
Note:	THIS PRODUCT IS FOR RESEARCH USE ONLY. NOT FOR USE IN DIAGNOSTIC, THERAPEUTIC OR COSMETIC PROCEDURES. NOT FOR HUMAN OR ANIMAL CONSUMPTION.

For Reference Only