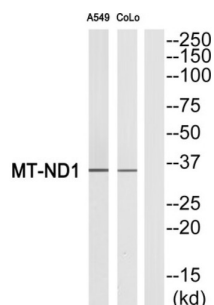
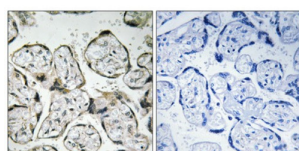


# Mitochondrially Encoded NADH:ubiquinone Oxidoreductase Core Subunit 1 (MT-ND1) Antibody

Catalogue No.: abx014637



Western blot analysis of extracts from A549 cells and COLO cells, using MT-ND1 antibody.



Immunohistochemistry analysis of paraffin-embedded human placenta tissue, using MT-ND1 antibody.

Rabbit polyclonal antibody against MT-ND1 protein. Immunogen region is Internal.

<b>Target:</b>	Mitochondrially Encoded NADH:ubiquinone Oxidoreductase Core Subunit 1 (MT-ND1)
<b>Clonality:</b>	Polyclonal
<b>Reactivity:</b>	Human
<b>Tested Applications:</b>	ELISA, WB, IHC
<b>Host:</b>	Rabbit
<b>Recommended dilutions:</b>	WB: 1/500 - 1/3000, IHC: 1/50 - 1/100, ELISA: 1/40000. Optimal dilutions/concentrations should be determined by the end user.
<b>Conjugation:</b>	Unconjugated
<b>Immunogen:</b>	The antiserum was produced against synthesized peptide derived from internal of human MT-ND1.
<b>Isotype:</b>	IgG
<b>Form:</b>	Liquid

# Datasheet

Version: 3.0.0  
Revision date: 03 Jun 2025



<b>Purification:</b>	Purified from rabbit antiserum by affinity chromatography using epitope-specific immunogen.
<b>Storage:</b>	Aliquot and store at -20°C. Avoid repeated freeze/thaw cycles.
<b>UniProt Primary AC:</b>	P03886 ( <a href="#">UniProt</a> , <a href="#">ExPASy</a> )
<b>KEGG:</b>	hsa:4535
<b>String:</b>	<a href="#">9606.ENSP00000354687</a>
<b>Enzyme Commission Number:</b>	EC 1.6.5.3
<b>Sequence:</b>	CRTPFDLAEGESELV
<b>Buffer:</b>	PBS (without Mg <sup>2+</sup> and Ca <sup>2+</sup> ), pH 7.4, 150 mM NaCl, 0.02% sodium azide, 50% glycerol.
<b>Concentration:</b>	1 mg/ml
<b>Note:</b>	THIS PRODUCT IS FOR RESEARCH USE ONLY. NOT FOR USE IN DIAGNOSTIC, THERAPEUTIC OR COSMETIC PROCEDURES. NOT FOR HUMAN OR ANIMAL CONSUMPTION.

For Reference Only