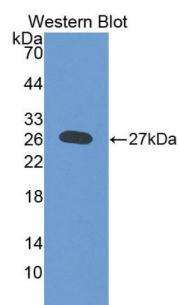
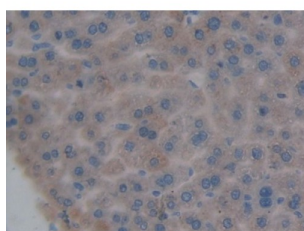


Deoxyribonuclease I Like Protein 2 (DNASE1L2) Antibody

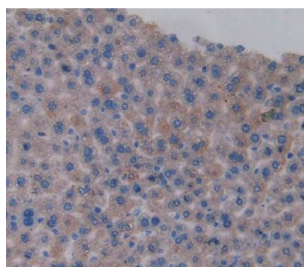
Catalogue No.: abx129612



Western blot analysis of the recombinant protein.



IHC-P analysis of Mouse Liver Tissue, with DAB staining.



IHC-P analysis of Heart tissue, with DAB staining.

Deoxyribonuclease I Like Protein 2 Antibody is a Rabbit Polyclonal against Deoxyribonuclease I Like Protein 2.

Target: Deoxyribonuclease I Like Protein 2 (DNASE1L2)

Clonality: Polyclonal

Reactivity: Mouse

Tested Applications: WB, IHC, IF/ICC

Host: Rabbit

Recommended dilutions: WB: 0.01-2 µg/ml, IHC: 5-20 µg/ml, IF/ICC: 5-20 µg/ml. Optimal dilutions/concentrations should be determined by the end user.

Conjugation: Unconjugated

Datasheet

Version: 4.0.0

Revision date: 20 Aug 2025



Immunogen:	DNASE1L2 (Asn28-Val232)
Form:	Liquid
Purification:	Purified by antigen-specific affinity chromatography, followed by Protein A affinity chromatography.
Storage:	Aliquot and store at -20°C. Avoid repeated freeze/thaw cycles.
Buffer:	0.01 M PBS, pH 7.4, containing 0.05% Proclin-300, 50% glycerol.
Note:	THIS PRODUCT IS FOR RESEARCH USE ONLY. NOT FOR USE IN DIAGNOSTIC, THERAPEUTIC OR COSMETIC PROCEDURES. NOT FOR HUMAN OR ANIMAL CONSUMPTION.

For Reference Only