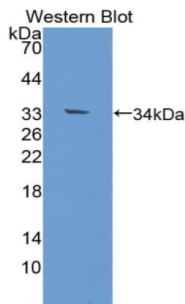
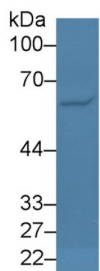


Early B-Cell Factor 1 (EBF1) Antibody

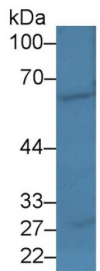
Catalogue No.: abx128786



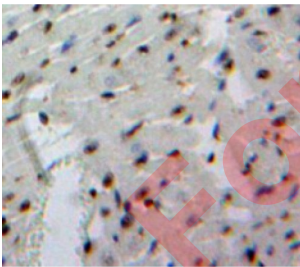
Western blot analysis of recombinant Human EBF1.



Western blot analysis of Human Raji cell lysates, using Rabbit Anti-Human EBF1 Antibody (3 µg/ml) and HRP-conjugated Goat Anti-Rabbit antibody ([abx400043](#), 0.2 µg/ml).



Western blot analysis of Rat Heart lysates, using Rabbit Anti-Human EBF1 Antibody (3 µg/ml) and HRP-conjugated Goat Anti-Rabbit antibody ([abx400043](#), 0.2 µg/ml).



IHC-P analysis of formalin fixed paraffin embedded heart tissue, with DAB staining.

Early B-Cell Factor 1 Antibody is a Rabbit Polyclonal against Early B-Cell Factor 1.

Target: Early B-Cell Factor 1 (EBF1)

Clonality: Polyclonal

Reactivity: Human

Datasheet

Version: 5.0.0

Revision date: 28 Feb 2025



Tested Applications: WB, IHC, IF/ICC

Host: Rabbit

Recommended dilutions: WB: 0.01-2 µg/ml, IHC: 5-20 µg/ml, IF/ICC: 5-20 µg/ml. Optimal dilutions/concentrations should be determined by the end user.

Conjugation: Unconjugated

Immunogen: [abx166658](#) - Recombinant EBF1 (Asp179-Ser451) expressed in E. coli

Form: Liquid

Purification: Purified by antigen-specific affinity chromatography, followed by Protein A affinity chromatography.

Storage: Aliquot and store at -20°C. Avoid repeated freeze/thaw cycles.

Buffer: 0.01 M PBS, pH 7.4, containing 0.05% Proclin-300, 50% glycerol.

Note: THIS PRODUCT IS FOR RESEARCH USE ONLY. NOT FOR USE IN DIAGNOSTIC, THERAPEUTIC OR COSMETIC PROCEDURES. NOT FOR HUMAN OR ANIMAL CONSUMPTION.

For Reference Only