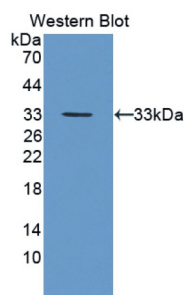
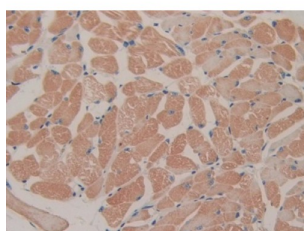


Feline Sarcoma Oncogene (FES) Antibody

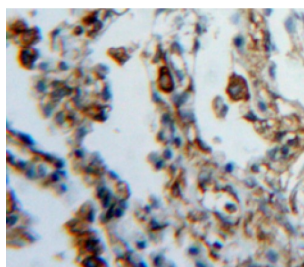
Catalogue No.: abx129797



Western blot analysis of the recombinant protein.



IHC-P analysis of Mouse Skeletal muscle Tissue, with DAB staining.



IHC-P analysis of lung tissue, with DAB staining.

Feline Sarcoma Oncogene Antibody is a Rabbit Polyclonal against Feline Sarcoma Oncogene.

Target: Feline Sarcoma Oncogene (FES)**Clonality:** Polyclonal**Reactivity:** Mouse**Tested Applications:** WB, IHC, IF/ICC**Host:** Rabbit**Recommended dilutions:** WB: 0.01-2 µg/ml, IHC: 5-20 µg/ml, IF/ICC: 5-20 µg/ml. Optimal dilutions/concentrations should be determined by the end user.**Conjugation:** Unconjugated

Datasheet

Version: 3.0.0
Revision date: 15 Aug 2025



Immunogen:	abx168455 - Recombinant FES (Asp510-Arg770) expressed in E. coli.
Isotype:	IgG
Form:	Liquid
Purification:	Purified by antigen-specific affinity chromatography, followed by Protein A affinity chromatography.
Storage:	Aliquot and store at -20°C. Avoid repeated freeze/thaw cycles.
Buffer:	0.01 M PBS, pH 7.4, containing 0.05% Proclin-300, 50% glycerol.
Specificity:	The antibody is a rabbit polyclonal antibody raised against FES. It has been selected for its ability to recognize FES in immunohistochemical staining and western blotting.
Note:	THIS PRODUCT IS FOR RESEARCH USE ONLY. NOT FOR USE IN DIAGNOSTIC, THERAPEUTIC OR COSMETIC PROCEDURES. NOT FOR HUMAN OR ANIMAL CONSUMPTION.

For Reference Only