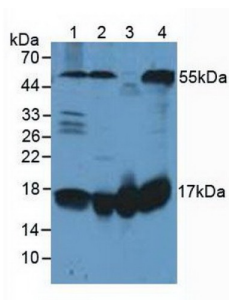
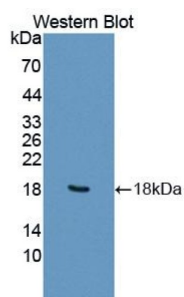


Fission 1 (FIS1) Antibody

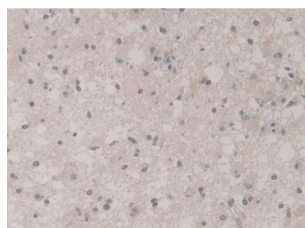
Catalogue No.: abx128247



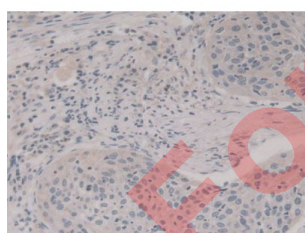
Western blot analysis of (1) Human Lung Tissue, (2) Human HeLa cells, (3) Rat Heart Tissue and (4) Rat Brain Tissue.



Western blot analysis of recombinant Human FIS1.



IHC-P analysis of Human Glioma Tissue, with DAB staining.



IHC-P analysis of Human Lung Cancer Tissue, with DAB staining.

Fission 1 Antibody is a Rabbit Polyclonal antibody against Fission 1.

Target: Fission 1 (FIS1)

Clonality: Polyclonal

Reactivity: Human

Datasheet

Version: 2.0.0
Revision date: 16 Jul 2025



Tested Applications: WB, IHC, IF/ICC

Host: Rabbit

Recommended dilutions: WB: 0.01-2 µg/ml, IHC: 5-20 µg/ml, IF/ICC: 5-20 µg/ml. Optimal dilutions/concentrations should be determined by the end user.

Conjugation: Unconjugated

Immunogen: FIS1 (Met1-Asp121)

Form: Liquid

Purification: Purified by antigen-specific affinity chromatography, followed by Protein A affinity chromatography.

Storage: Aliquot and store at -20°C. Avoid repeated freeze/thaw cycles.

UniProt Primary AC: Q9Y3D6 ([UniProt](#), [ExPASy](#))

String: [9606.ENSP00000223136](#)

Buffer: 0.01 M PBS, pH 7.4, containing 0.05% Proclin-300, 50% glycerol.

Note: THIS PRODUCT IS FOR RESEARCH USE ONLY. NOT FOR USE IN DIAGNOSTIC, THERAPEUTIC OR COSMETIC PROCEDURES. NOT FOR HUMAN OR ANIMAL CONSUMPTION.