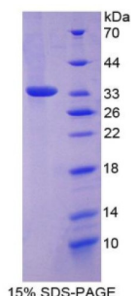


Mouse FOS Like Antigen 1 (FOSL1) Protein

Catalogue No.: abx167489



SDS-PAGE analysis of FOS Like Antigen 1 Protein.

FOS Like Antigen 1 Protein is a recombinant Mouse protein expressed in E. coli.

Target: FOS Like Antigen 1 (FOSL1)

Origin: Mouse

Expression: Recombinant

Tested Applications: WB, SDS-PAGE

Host: E. coli

Conjugation: Unconjugated

Form: Lyophilized

Purity: > 95%

Reconstitution: To keep the original salt concentration, we recommend reconstituting to the original concentration prior to lyophilization (see Concentration) in ddH₂O. If a lower concentration is required, dilute in PBS, pH 7.4. If a higher concentration is required, the product can be reconstituted directly in PBS, pH 7.4, though please note that this will change the overall salt concentration. The stock concentration should be between 0.1-1.0 mg/ml. Do not vortex.

Storage: Store at 2-8 °C for up to one month. Store at -80 °C for up to one year. Avoid repeated freeze/thaw cycles.

UniProt Primary AC: P48755 ([UniProt](#), [ExPASy](#))

KEGG: mmu:14283

String: [10090.ENSMUSP00000025850](#)

Datasheet

Version: 1.0.0

Revision date: 14 Apr 2025



Molecular Weight: Calculated MW: 33.6 kDa

Sequence Fragment: Met1-Leu273

Tag: N-terminal His tag

Buffer: Prior to lyophilization: PBS, pH 7.4, containing 0.01% Sarcosyl, 1 mM DTT, 5% Trehalose and Proclin-300.

Activity: Not tested

Concentration: Prior to lyophilization: 200 µg/ml

Note: THIS PRODUCT IS FOR RESEARCH USE ONLY. NOT FOR USE IN DIAGNOSTIC, THERAPEUTIC OR COSMETIC PROCEDURES. NOT FOR HUMAN OR ANIMAL CONSUMPTION.

For Reference Only