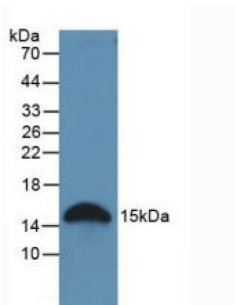
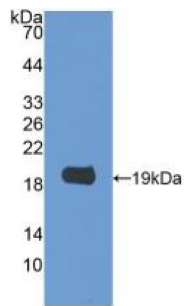


Galectin 2 (LGALS2) Antibody

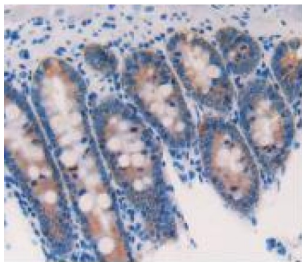
Catalogue No.:abx130156



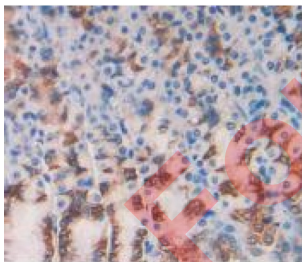
Western blot analysis of Rat Stomach Tissue.



Western blot analysis of recombinant Rat GAL2.



IHC-P analysis of Rat Intestine Tissue, with DAB staining.



IHC-P analysis of Rat Stomach Tissue, with DAB staining.

Galectin 2 Antibody is a Rabbit Polyclonal against Galectin 2.

Target: Galectin 2 (LGALS2)

Clonality: Polyclonal

Reactivity: Rat

Datasheet

Version: 3.0.0
Revision date: 08 Oct 2025



Tested Applications: WB, IHC, IF/ICC

Host: Rabbit

Recommended dilutions: WB: 0.01-2 µg/ml, IHC: 5-20 µg/ml, IF/ICC: 5-20 µg/ml. Optimal dilutions/concentrations should be determined by the end user.

Conjugation: Unconjugated

Immunogen: GAL2 (Met1-Glu130)

Form: Liquid

Purification: Purified by antigen-specific affinity chromatography, followed by Protein A affinity chromatography.

Storage: Aliquot and store at -20°C. Avoid repeated freeze/thaw cycles.

Buffer: 0.01 M PBS, pH 7.4, containing 0.05% Proclin-300, 50% glycerol.

Note: THIS PRODUCT IS FOR RESEARCH USE ONLY. NOT FOR USE IN DIAGNOSTIC, THERAPEUTIC OR COSMETIC PROCEDURES. NOT FOR HUMAN OR ANIMAL CONSUMPTION.

For Reference Only