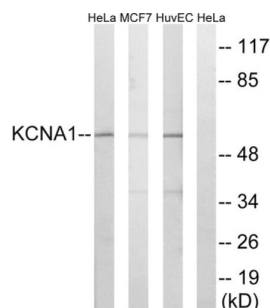


Potassium Voltage-Gated Channel Subfamily A Member 1 (KCNA1) Antibody

Catalogue No.: abx014728



Western blot analysis of extracts from HeLa cells, MCF-7 cells and HuvEc cells, using KCNA1 antibody.

Rabbit polyclonal antibody against KCNA1 protein. Immunogen region is Internal.

| | |
|-------------------------------|--|
| Target: | Potassium Voltage-Gated Channel Subfamily A Member 1 (KCNA1) |
| Clonality: | Polyclonal |
| Reactivity: | Human, Mouse, Rat |
| Tested Applications: | ELISA, WB |
| Host: | Rabbit |
| Recommended dilutions: | WB: 1/500 - 1/3000, ELISA: 1/10000. Optimal dilutions/concentrations should be determined by the end user. |
| Conjugation: | Unconjugated |
| Immunogen: | The antiserum was produced against synthesized peptide derived from internal of human KCNA1. |
| Isotype: | IgG |
| Form: | Liquid |
| Purification: | Purified from rabbit antiserum by affinity chromatography using epitope-specific immunogen. |
| Storage: | Aliquot and store at -20°C. Avoid repeated freeze/thaw cycles. |
| UniProt Primary AC: | Q09470 (UniProt , ExPASy) |
| KEGG: | hsa:3736 |

Datasheet

Version: 2.0.0

Revision date: 30 May 2025



String: [9606.ENSF00000371985](#)

Buffer: PBS (without Mg^{2+} and Ca^{2+}), pH 7.4, 150 mM NaCl, 0.02% sodium azide, 50% glycerol.

Concentration: 1 mg/ml

Note: THIS PRODUCT IS FOR RESEARCH USE ONLY. NOT FOR USE IN DIAGNOSTIC, THERAPEUTIC OR COSMETIC PROCEDURES. NOT FOR HUMAN OR ANIMAL CONSUMPTION.

For Reference Only