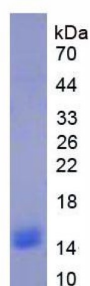


Human Glycated Hemoglobin (HbA1c) Protein

Catalogue No.: abx167811



SDS-PAGE analysis of Glycated Hemoglobin Protein.

Glycated Hemoglobin A1c Protein (Native) is a protein produced in Human.

Target:	Glycated Hemoglobin (HbA1c)
Origin:	Human
Expression:	Native
Tested Applications:	WB, SDS-PAGE
Host:	Human
Conjugation:	Unconjugated
Form:	Lyophilized
Purity:	> 92% (SDS-PAGE)
Purification:	Purified by salt co-precipitation and ion-exchange chromatography.
Reconstitution:	To keep the original salt concentration, we recommend reconstituting to the original concentration prior to lyophilization (see Concentration) in ddH ₂ O. If a lower concentration is required, dilute in 10 mM PBS, pH 7.4. If a higher concentration is required, the product can be reconstituted directly in 10 mM PBS, pH 7.4, though please note that this will change the overall salt concentration. The stock concentration should be between 0.1-1.0 mg/ml. Do not vortex.
Storage:	Store at 2-8 °C for up to one month. Store at -80 °C for up to one year. Avoid repeated freeze/thaw cycles.
Molecular Weight:	Calculated MW: 14 kDa, 15 kDa Observed MW: 14 kDa, 15 kDa
Sequence:	This product is a native protein and the sequence has not been determined.

Datasheet

Version: 5.0.0

Revision date: 04 Mar 2025



Buffer: Prior to lyophilization: PBS, pH 7.4, containing 0.01% Sarcosyl and 5% Trehalose.

Activity: Not tested

Concentration: Prior to lyophilization: 1500 µg/ml

Note: THIS PRODUCT IS FOR RESEARCH USE ONLY. NOT FOR USE IN DIAGNOSTIC, THERAPEUTIC OR COSMETIC PROCEDURES. NOT FOR HUMAN OR ANIMAL CONSUMPTION.

For Reference Only