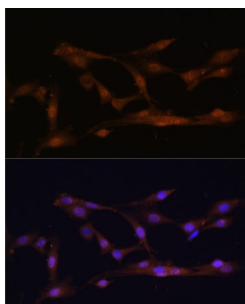


## Cystathionine Beta-Synthase (CBS) Antibody

Catalogue No.: abx001233



Immunofluorescence analysis of C6 cells using CBS Antibody (1/100 dilution). Blue: DAPI for nuclear staining.

CBS Antibody is a Rabbit Polyclonal antibody against CBS. The CBS gene encodes cystathionine beta-synthase, which catalyzes the first irreversible step of transsulfuration. The CBS enzyme is a homotetramer of 63-kD subunits and requires pyridoxal phosphate and heme for activity (PMID:11230183). CBS protein is localized in most areas of the brain, but predominantly in the cell bodies and neuronal processes of Purkinje cells and Ammon's horn neurons (PMID:12588964). This antibody is specific to CBS.

|                               |  |
|-------------------------------|--|
| <b>Target:</b>                | Cystathionine Beta-Synthase (CBS)  |
| <b>Clonality:</b>             | Polyclonal   |
| <b>Reactivity:</b>            | Human, Mouse, Rat  |
| <b>Tested Applications:</b>   | IF/ICC   |
| <b>Host:</b>                  | Rabbit   |
| <b>Recommended dilutions:</b> | IF/ICC: 1/50 - 1/200. Optimal dilutions/concentrations should be determined by the end user. |
| <b>Conjugation:</b>           | Unconjugated   |
| <b>Immunogen:</b>             | Recombinant fusion protein corresponding to human CBS  |
| <b>Isotype:</b>               | IgG  |
| <b>Form:</b>                  | Liquid   |
| <b>Purification:</b>          | Purified by affinity chromatography.   |
| <b>Storage:</b>               | Aliquot and store at -20°C. Avoid repeated freeze/thaw cycles.                               |
| <b>UniProt Primary AC:</b>    | P35520 ( <a href="#">UniProt</a> , <a href="#">ExPASy</a> )                                  |

# Datasheet

Version: 3.0.0

Revision date: 15 Jun 2025



**Gene Symbol:** CBS

**GeneID:** [875](#)

**NCBI Accession:** NP\_000062.1

**KEGG:** hsa:102724560, hsa:875

**Buffer:** PBS, pH 7.3, containing 0.02% sodium azide, 50% glycerol.

**Concentration:** 1 mg/ml

**Note:** THIS PRODUCT IS FOR RESEARCH USE ONLY. NOT FOR USE IN DIAGNOSTIC, THERAPEUTIC OR COSMETIC PROCEDURES. NOT FOR HUMAN OR ANIMAL CONSUMPTION.

For Reference Only