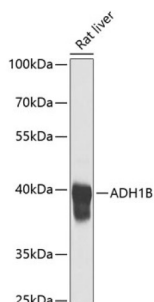


Alcohol Dehydrogenase 1B (ADH1B) Antibody

Catalogue No.: abx001235



Western blot analysis of extracts of Rat liver using ADH1B Antibody (1/1000 dilution).

ADH1B Antibody is a Rabbit Polyclonal antibody against ADH1B. The ADH1B gene encodes the beta subunit of class I alcohol dehydrogenase (ADH), an enzyme that catalyzes the rate-limiting step for ethanol metabolism: the oxidation of alcohol to acetaldehyde. Class 1 ADH is a homo- or heterodimeric molecule, formed by the association of 3 types of class I ADH subunits, alpha (ADH1A), beta, and gamma (ADH1C). ADH1B is also named as ADH2 and belongs to the zinc-containing alcohol dehydrogenase family. This protein can exist as a homodimer (PMID:19365573). This antibody is specific to ADH1B.

Target: Alcohol Dehydrogenase 1B (ADH1B)

Clonality: Polyclonal

Reactivity: Rat

Tested Applications: WB

Host: Rabbit

Recommended dilutions: WB: 1/500 - 1/2000. Optimal dilutions/concentrations should be determined by the end user.

Conjugation: Unconjugated

Immunogen: Recombinant fusion protein corresponding to human ADH1B

Isotype: IgG

Form: Liquid

Purification: Purified by affinity chromatography.

Storage: Aliquot and store at -20°C. Avoid repeated freeze/thaw cycles.

UniProt Primary AC: P00325 ([UniProt](#), [ExPASy](#))

Datasheet

Version: 4.0.0

Revision date: 24 Jun 2025



Gene Symbol: ADH1B

GeneID: [125](#)

NCBI Accession: NP_000659.2

KEGG: hsa:125

String: [9606.ENSP00000306606](#)

Molecular Weight: Calculated MW: 35 kDa/39 kDa
Observed MW: 40 kDa

Buffer: PBS, pH 7.3, containing 0.02% sodium azide, 50% glycerol.

Concentration: 1 mg/ml

Note: THIS PRODUCT IS FOR RESEARCH USE ONLY. NOT FOR USE IN DIAGNOSTIC, THERAPEUTIC OR COSMETIC PROCEDURES. NOT FOR HUMAN OR ANIMAL CONSUMPTION.

For Reference Only