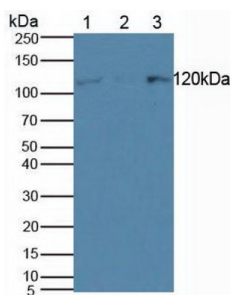
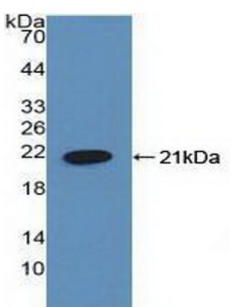


Helicase Like Transcription Factor (HLTF) Antibody

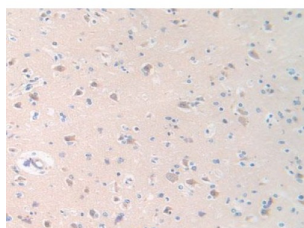
Catalogue No.: abx128976



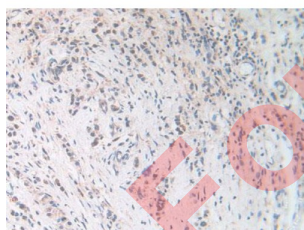
Western blot analysis of (1) Human HeLa cells, (2) Human K562 Cells and (3) Human jurkat Cells.



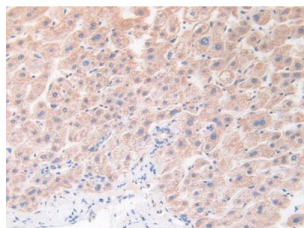
Western blot analysis of recombinant Human HLTF.



IHC-P analysis of Human Brain Tissue, with DAB staining.



IHC-P analysis of Human Stomach Cancer Tissue, with DAB staining.



IHC-P analysis of Human Liver Tissue, with DAB staining.

Datasheet

Version: 3.0.0
Revision date: 16 Jul 2025



Helicase Like Transcription Factor Antibody is a Rabbit Polyclonal against Helicase Like Transcription Factor.

Target:	Helicase Like Transcription Factor (HLTF)
Clonality:	Polyclonal
Reactivity:	Human
Tested Applications:	WB, IHC, IF/ICC
Host:	Rabbit
Recommended dilutions:	WB: 1-5 µg/ml, IHC: 5-20 µg/ml, IF/ICC: 5-20 µg/ml. Optimal dilutions/concentrations should be determined by the end user.
Conjugation:	Unconjugated
Immunogen:	HLTF (Ala837-Lys996)
Form:	Liquid
Purification:	Purified by antigen-specific affinity chromatography, followed by Protein A affinity chromatography.
Storage:	Aliquot and store at -20°C. Avoid repeated freeze/thaw cycles.
Buffer:	0.01 M PBS, pH 7.4, containing 0.05% Proclin-300, 50% glycerol.
Note:	THIS PRODUCT IS FOR RESEARCH USE ONLY. NOT FOR USE IN DIAGNOSTIC, THERAPEUTIC OR COSMETIC PROCEDURES. NOT FOR HUMAN OR ANIMAL CONSUMPTION.