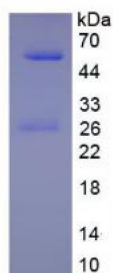


## Human Immunoglobulin G1 (IgG1) Protein

Catalogue No.: abx168586



SDS-PAGE analysis of Immunoglobulin G1 Protein.

Human Immunoglobulin G1 Protein is a native Human protein.

This protein is the immunogen for the following antibodies: [abx101625](#)

**Target:** Immunoglobulin G1 (IgG1)

**Origin:** Human

**Expression:** Native

**Tested Applications:** WB, SDS-PAGE

**Host:** Human

**Conjugation:** Unconjugated

**Form:** Lyophilized

**Purity:** > 90%

**Reconstitution:** To keep the original salt concentration, we recommend reconstituting to the original concentration prior to lyophilization (see Concentration) in ddH<sub>2</sub>O. If a lower concentration is required, dilute in PBS, pH 7.4. If a higher concentration is required, the product can be reconstituted directly in PBS, pH 7.4, though please note that this will change the overall salt concentration. The stock concentration should be between 0.1-1.0 mg/ml. Do not vortex.

**Storage:** Store at 2-8 °C for up to one month. Store at -80 °C for up to one year. Avoid repeated freeze/thaw cycles.

**UniProt Primary AC:** P01857 ([UniProt](#), [ExPASy](#))

# Datasheet

Version: 5.0.0

Revision date: 25 May 2025



<b>Molecular Weight:</b>	Calculated MW: 146.0 kDa Observed MW: 55 kDa, 22 kDa As a result of the disulfide bonds in human IgG1, two lines are observed at approximately 55kDa, which corresponds to the heavy chain, and two lines are observed at approximately 25kDa, which corresponds to the light chain, in SDS-PAGE under reducing conditions.
<b>Sequence:</b>	This product is a native protein and the sequence has not been determined.
<b>Buffer:</b>	Prior to lyophilization: PBS, pH 7.4, containing 0.01% Sarcosyl, 1 mM DTT, 5% Trehalose and Proclin-300.
<b>Activity:</b>	Not tested
<b>Concentration:</b>	Prior to lyophilization: 200 µg/ml
<b>Note:</b>	THIS PRODUCT IS FOR RESEARCH USE ONLY. NOT FOR USE IN DIAGNOSTIC, THERAPEUTIC OR COSMETIC PROCEDURES. NOT FOR HUMAN OR ANIMAL CONSUMPTION.

For Reference Only