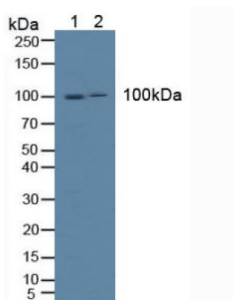
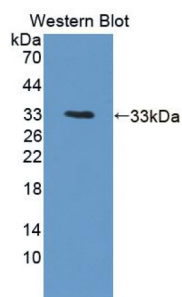


Intercellular Adhesion Molecule 1 (ICAM1) Antibody

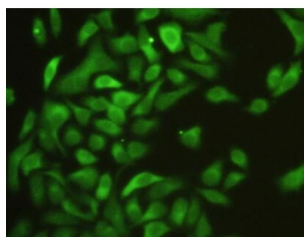
Catalogue No.: abx130249



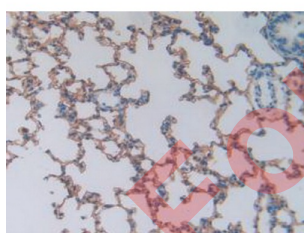
Western blot analysis of (1) Human HeLa cells and (2) Human K562 Cells.



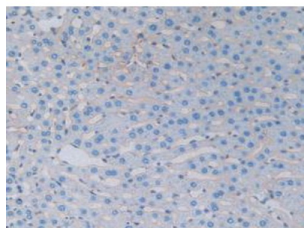
Western blot analysis of recombinant Rat ICAM1.



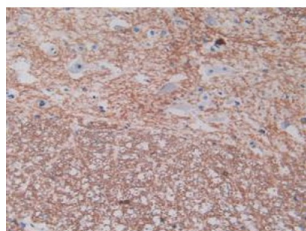
IHC-P analysis of HeLa cells, with FITC staining.



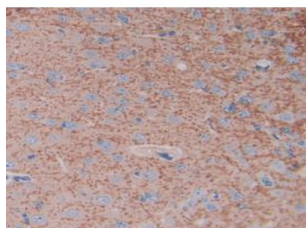
IHC-P analysis of Rat Lung Tissue, with DAB staining.



IHC-P analysis of Rat Liver Tissue, with DAB staining.



IHC-P analysis of Rat Spinal Cord Tissue, with DAB staining.



IHC-P analysis of Rat Brain Tissue, with DAB staining.

Intercellular Adhesion Molecule 1 Antibody is a Rabbit Polyclonal against Intercellular Adhesion Molecule 1.

Target:	Intercellular Adhesion Molecule 1 (ICAM1)
Research Area:	Cellular Differentiation and Adhesion, Tumor Immunity, Infection Immunity
Clonality:	Polyclonal
Reactivity:	Rat
Tested Applications:	WB, IHC, IF/ICC
Host:	Rabbit
Recommended dilutions:	WB: 0.01-5 µg/ml, IHC: 5-20 µg/ml, IF/ICC: 5-20 µg/ml. Optimal dilutions/concentrations should be determined by the end user.
Conjugation:	Unconjugated
Immunogen:	ICAM1 (Ser102-Arg306)
Form:	Liquid
Purification:	Purified by antigen-specific affinity chromatography, followed by Protein A affinity chromatography.
Storage:	Aliquot and store at -20°C. Avoid repeated freeze/thaw cycles.

Datasheet

Version: 3.0.0

Revision date: 07 Oct 2025



UniProt Primary AC: Q00238 ([UniProt](#), [ExPASy](#))

Gene Symbol: ICAM1

Buffer: 0.01 M PBS, pH 7.4, containing 0.05% Proclin-300, 50% glycerol.

Note: THIS PRODUCT IS FOR RESEARCH USE ONLY. NOT FOR USE IN DIAGNOSTIC, THERAPEUTIC OR COSMETIC PROCEDURES. NOT FOR HUMAN OR ANIMAL CONSUMPTION.

For Reference Only