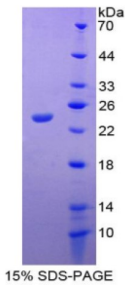
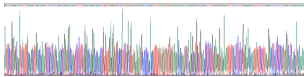


**Rabbit Interleukin 18 (IL18) Protein**

Catalogue No.:abx167555



SDS-PAGE analysis of IL18 Protein.



Gene Sequencing extract of IL18 Protein.

Interleukin 18 Protein is a recombinant Rabbit protein expressed in E. coli.

<b>Target:</b>	Interleukin 18 (IL18)
<b>Research Area:</b>	Infection Immunity
<b>Origin:</b>	Rabbit
<b>Expression:</b>	Recombinant
<b>Tested Applications:</b>	WB, SDS-PAGE
<b>Host:</b>	E. coli
<b>Conjugation:</b>	Unconjugated
<b>Form:</b>	Lyophilized
<b>Activity:</b>	Not tested
<b>Purity:</b>	> 97%

# Datasheet

Version: 5.0.0  
Revision date: 12 Oct 2025



<b>Reconstitution:</b>	To keep the original salt concentration, we recommend reconstituting to the original concentration prior to lyophilization (see Concentration) in ddH <sub>2</sub> O. If a lower concentration is required, dilute in 10 mM PBS, pH 7.4. If a higher concentration is required, the product can be reconstituted directly in 10 mM PBS, pH 7.4, though please note that this will change the overall salt concentration. The stock concentration should be between 0.1-1.0 mg/ml. Do not vortex.
<b>Storage:</b>	Store at 2-8°C for up to one month. For long-term storage, store at -80°C. Avoid repeated freeze/thaw cycles.
<b>UniProt Primary AC:</b>	B1A3U4 ( <a href="#">UniProt</a> , <a href="#">ExPASy</a> )
<b>Molecular Weight:</b>	Calculated MW: 22.3 kDa Observed MW (SDS-PAGE): 25 kDa
<b>Sequence Fragment:</b>	Leu32-Asn192
<b>Sequence:</b>	LES DYFGKL EPKIS IIRNL NDQVL FMDQG QQPVFEDMPD SDCIENAPQT IFIIYMYKDS NTRGMAVSLS VKCKKIFTLS CENKIISFKE LTPPNDINDT KSDIIFQKH LAGQKDKMQF ESSLYDGYFL ACGKEKDLFK LVLKRKDDKN DKSVIFSVQN KN
<b>Tag:</b>	N-terminal His tag
<b>Buffer:</b>	Prior to lyophilization: PBS, pH 7.4, containing 0.01% Sarcosyl and 5% Trehalose.
<b>Concentration:</b>	Prior to lyophilization: 400 µg/ml
<b>Note:</b>	THIS PRODUCT IS FOR RESEARCH USE ONLY. NOT FOR USE IN DIAGNOSTIC, THERAPEUTIC OR COSMETIC PROCEDURES. NOT FOR HUMAN OR ANIMAL CONSUMPTION.