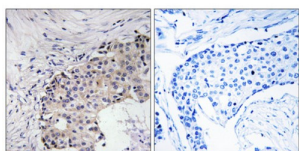


Scavenger Receptor Class F Member 2 (SCARF2) Antibody

Catalogue No.: abx014841



Immunohistochemistry analysis of paraffin-embedded human breast carcinoma tissue using SCARF2 antibody.

Rabbit polyclonal antibody against SCARF2 protein. Immunogen region is Internal.

Target:	Scavenger Receptor Class F Member 2 (SCARF2)
Clonality:	Polyclonal
Reactivity:	Human
Tested Applications:	ELISA, IHC
Host:	Rabbit
Recommended dilutions:	IHC: 1/50 - 1/100, ELISA: 1/40000. Optimal dilutions/concentrations should be determined by the end user.
Conjugation:	Unconjugated
Immunogen:	The antiserum was produced against synthesized peptide derived from internal of human SCARF2.
Isotype:	IgG
Form:	Liquid
Purification:	Purified from rabbit antiserum by affinity chromatography using epitope-specific immunogen.
Storage:	Aliquot and store at -20°C. Avoid repeated freeze/thaw cycles.
UniProt Primary AC:	Q96GP6 (UniProt , ExPASy)
KEGG:	hsa:91179
String:	9606.ENSP00000477564

Datasheet

Version: 3.0.0

Revision date: 03 Oct 2025



Sequence: CKRKRTPSDKSAHTVEH

Buffer: PBS (without Mg^{2+} and Ca^{2+}), pH 7.4, 150 mM NaCl, 0.02% sodium azide, 50% glycerol.

Concentration: 1 mg/ml

Note: THIS PRODUCT IS FOR RESEARCH USE ONLY. NOT FOR USE IN DIAGNOSTIC, THERAPEUTIC OR COSMETIC PROCEDURES. NOT FOR HUMAN OR ANIMAL CONSUMPTION.

For Reference Only