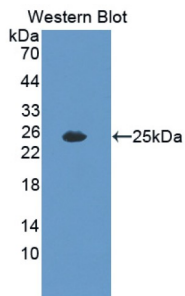
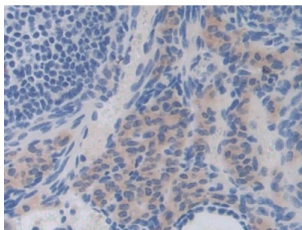


Interleukin 35 (IL35) Antibody

Catalogue No.: abx129830



Western blot analysis of the recombinant protein.



IHC-P analysis of Mouse Ovary Tissue, with DAB staining.

Interleukin 35 Antibody is a Rabbit Polyclonal against Interleukin 35.

Target:	Interleukin 35 (IL35)
Clonality:	Polyclonal
Reactivity:	Mouse
Tested Applications:	WB, IHC, IF/ICC
Host:	Rabbit
Recommended dilutions:	WB: 0.01-2 µg/ml, IHC: 5-20 µg/ml, IF/ICC: 5-20 µg/ml. Optimal dilutions/concentrations should be determined by the end user.
Conjugation:	Unconjugated
Immunogen:	abx167498 - Recombinant IL35 (Arg23-Ala215) with two N-terminal tags, His-tag and T7-tag, expressed in E. coli.
Isotype:	IgG
Form:	Liquid
Purification:	Purified by antigen-specific affinity chromatography, followed by Protein A affinity chromatography.

Datasheet

Version: 2.0.0
Revision date: 04 Oct 2025



Storage: Aliquot and store at -20°C. Avoid repeated freeze/thaw cycles.

UniProt Primary AC: P43431 ([UniProt](#), [ExPASy](#))

KEGG: mmu:16159

String: [10090.ENSMUSP00000029345](#)

Buffer: 0.01 M PBS, pH 7.4, containing 0.05% Proclin-300, 50% glycerol.

Specificity: The antibody is a rabbit polyclonal antibody raised against IL35. It has been selected for its ability to recognize IL35 in immunohistochemical staining and western blotting.

Note: THIS PRODUCT IS FOR RESEARCH USE ONLY. NOT FOR USE IN DIAGNOSTIC, THERAPEUTIC OR COSMETIC PROCEDURES. NOT FOR HUMAN OR ANIMAL CONSUMPTION.

For Reference Only