

Datasheet

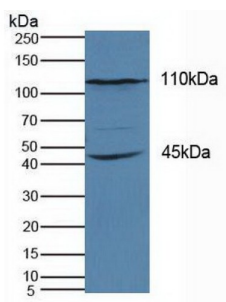
Version: 3.0.0

Revision date: 17 Jul 2025

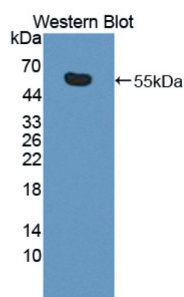


Kinesin Family, Member 18A (KIF18A) Antibody

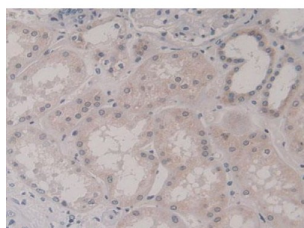
Catalogue No.: abx128038



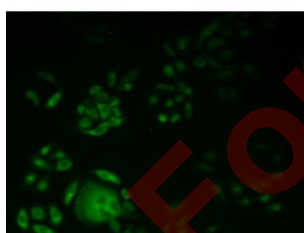
Western blot analysis of Human HeLa cells.



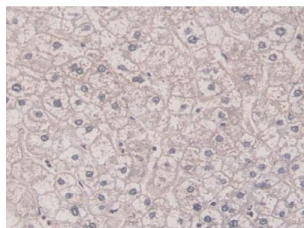
Western blot analysis of recombinant Human KIF18A.



IHC-P analysis of Human Kidney Tissue, with DAB staining.



IHC-P analysis of Human HeLa cells, with FITC staining.



IHC-P analysis of Human Liver Tissue, with DAB staining.

Datasheet

Version: 3.0.0
Revision date: 17 Jul 2025



Kinesin Family, Member 18A Antibody is a Rabbit Polyclonal against Kinesin Family, Member 18A.

Target:	Kinesin Family, Member 18A (KIF18A)
Clonality:	Polyclonal
Reactivity:	Human
Tested Applications:	WB, IHC, IF/ICC
Host:	Rabbit
Recommended dilutions:	WB: 0.01-2 µg/ml, IHC: 5-20 µg/ml, IF/ICC: 5-20 µg/ml. Optimal dilutions/concentrations should be determined by the end user.
Conjugation:	Unconjugated
Immunogen:	KIF18A (Met1-Lys453)
Form:	Liquid
Purification:	Purified by antigen-specific affinity chromatography, followed by Protein A affinity chromatography.
Storage:	Aliquot and store at -20°C. Avoid repeated freeze/thaw cycles.
UniProt Primary AC:	Q8NI77 (UniProt , ExPASy)
KEGG:	hsa:81930
String:	9606.ENSP00000263181
Buffer:	0.01 M PBS, pH 7.4, containing 0.05% Proclin-300, 50% glycerol.
Note:	THIS PRODUCT IS FOR RESEARCH USE ONLY. NOT FOR USE IN DIAGNOSTIC, THERAPEUTIC OR COSMETIC PROCEDURES. NOT FOR HUMAN OR ANIMAL CONSUMPTION.