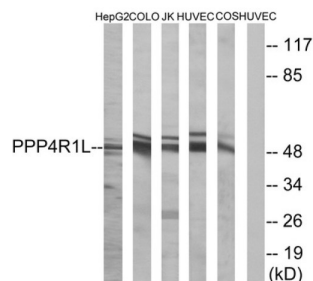


Protein Phosphatase 4 Regulatory Subunit 1 Like (pseudogene) (PPP4R1L) Antibody

Catalogue No.: abx014870



Western blot analysis of extracts from HepG2 cells, COLO cells, Jurkat cells, HUVEC cells and COS cells, using PPP4R1L antibody.

Rabbit polyclonal antibody against PPP4R1L protein. Immunogen region is Internal.

Target:	Protein Phosphatase 4 Regulatory Subunit 1 Like (pseudogene) (PPP4R1L)
Clonality:	Polyclonal
Reactivity:	Human
Tested Applications:	ELISA, WB
Host:	Rabbit
Recommended dilutions:	WB: 1/500 - 1/3000, ELISA: 1/10000. Optimal dilutions/concentrations should be determined by the end user.
Conjugation:	Unconjugated
Immunogen:	The antiserum was produced against synthesized peptide derived from internal of human PPP4R1L.
Isotype:	IgG
Form:	Liquid
Purification:	Purified from rabbit antiserum by affinity chromatography using epitope-specific immunogen.
Storage:	Aliquot and store at -20°C. Avoid repeated freeze/thaw cycles.
UniProt Primary AC:	Q9P1A2 (UniProt , ExPASy)
Buffer:	PBS (without Mg^{2+} and Ca^{2+}), pH 7.4, 150 mM NaCl, 0.02% sodium azide, 50% glycerol.

Datasheet

Version: 3.0.0

Revision date: 13 Aug 2025



Concentration: 1 mg/ml

Note: THIS PRODUCT IS FOR RESEARCH USE ONLY. NOT FOR USE IN DIAGNOSTIC, THERAPEUTIC OR COSMETIC PROCEDURES. NOT FOR HUMAN OR ANIMAL CONSUMPTION.

For Reference Only