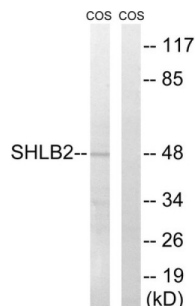
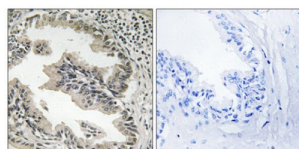


SH3 Domain Containing GRB2 Like, Endophilin B2 (SH3GLB2) Antibody

Catalogue No.: abx014885



Western blot analysis of extracts from COS cells, using SH3GLB2 antibody.



Immunohistochemistry analysis of paraffin-embedded human prostate carcinoma tissue using SH3GLB2 antibody.

Rabbit polyclonal antibody against SH3GLB2 protein. Immunogen region is Internal.

Target: SH3 Domain Containing GRB2 Like, Endophilin B2 (SH3GLB2)

Clonality: Polyclonal

Reactivity: Human, Mouse, Rat

Tested Applications: ELISA, WB, IHC

Host: Rabbit

Recommended dilutions: WB: 1/500 - 1/3000, IHC: 1/50 - 1/100, ELISA: 1/40000. Optimal dilutions/concentrations should be determined by the end user.

Conjugation: Unconjugated

Immunogen: The antiserum was produced against synthesized peptide derived from internal of human SH3GLB2.

Isotype: IgG

Form: Liquid

Datasheet

Version: 3.0.0

Revision date: 15 Aug 2025



Purification: Purified from rabbit antiserum by affinity chromatography using epitope-specific immunogen.

Storage: Aliquot and store at -20°C. Avoid repeated freeze/thaw cycles.

UniProt Primary AC: Q9NR46 ([UniProt](#), [ExPASy](#))

String: [9606.ENSP00000361634](#)

Sequence: CISKERRLLQNRRLDLD

Buffer: PBS (without Mg^{2+} and Ca^{2+}), pH 7.4, 150 mM NaCl, 0.02% sodium azide, 50% glycerol.

Concentration: 1 mg/ml

Note: THIS PRODUCT IS FOR RESEARCH USE ONLY. NOT FOR USE IN DIAGNOSTIC, THERAPEUTIC OR COSMETIC PROCEDURES. NOT FOR HUMAN OR ANIMAL CONSUMPTION.

For Reference Only