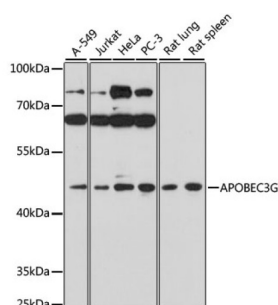


## DNA dC->dU-Editing Enzyme APOBEC-3G (APOBEC3G) Antibody

Catalogue No.: abx001248



Western blot analysis of extracts of various cell lines using APOBEC3G Antibody (1/1000 dilution).

APOBEC3G Antibody is a Rabbit Polyclonal antibody against APOBEC3G. This gene is a member of the cytidine deaminase gene family. It is one of seven related genes or pseudogenes found in a cluster, thought to result from gene duplication, on chromosome 22. Members of the cluster encode proteins that are structurally and functionally related to the C to U RNA-editing cytidine deaminase APOBEC1. It is thought that the proteins may be RNA editing enzymes and have roles in growth or cell cycle control. The protein encoded by this gene has been found to be a specific inhibitor of human immunodeficiency virus-1 (HIV-1) infectivity. [provided by RefSeq, Jul 2008].

**Target:** DNA dC->dU-Editing Enzyme APOBEC-3G (APOBEC3G)

**Clonality:** Polyclonal

**Reactivity:** Human, Rat

**Tested Applications:** WB

**Host:** Rabbit

**Recommended dilutions:** WB: 1/500 - 1/2000. Optimal dilutions/concentrations should be determined by the end user.

**Conjugation:** Unconjugated

**Immunogen:** Recombinant fusion protein corresponding to human APOBEC3G

**Isotype:** IgG

**Form:** Liquid

**Purification:** Purified by affinity chromatography.

**Storage:** Aliquot and store at -20°C. Avoid repeated freeze/thaw cycles.

**UniProt Primary AC:** Q9HC16 ([UniProt](#), [ExPASy](#))

# Datasheet

Version: 6.0.0  
Revision date: 10 Jul 2025



**Gene Symbol:** APOBEC3G

**GeneID:** [60489](#)

**NCBI Accession:** NP\_068594.1

**String:** [9606.ENSP00000385057](#)

**Molecular Weight:** Calculated MW: 9 kDa/46 kDa  
Observed MW: 46 kDa

**Buffer:** PBS, pH 7.3, containing 0.05% Proclin-300, 50% glycerol.

**Concentration:** 1 mg/ml

**Note:** THIS PRODUCT IS FOR RESEARCH USE ONLY. NOT FOR USE IN DIAGNOSTIC, THERAPEUTIC OR COSMETIC PROCEDURES. NOT FOR HUMAN OR ANIMAL CONSUMPTION.

For Reference Only