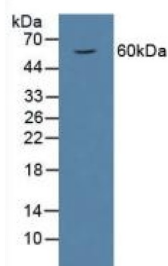
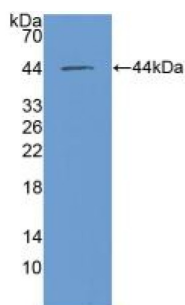


Macrophage Migration Inhibitory Factor (MIF) Antibody

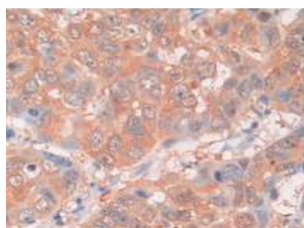
Catalogue No.: abx128725



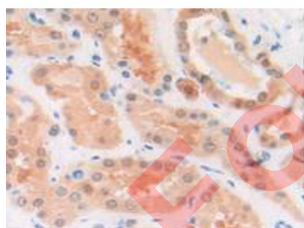
Western blot analysis of (1) Human Jurkat Cells, (2) Mouse Spleen Tissue, (3) Human U-937 Cells and (4) Mouse Brain Tissue.



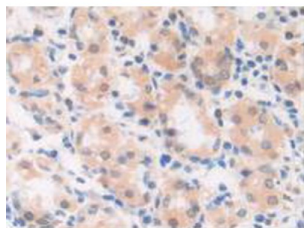
Western blot analysis of recombinant Human MIF.



IHC-P analysis of Human Breast Cancer Tissue, with DAB staining.



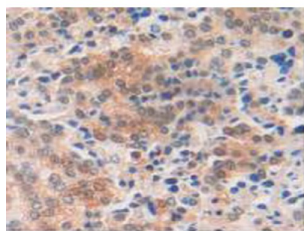
IHC-P analysis of Human Kidney Tissue, with DAB staining.



IHC-P analysis of Human Stomach Tissue, with DAB staining.

Datasheet

Version: 3.0.0
Revision date: 19 Aug 2025



IHC-P analysis of Human Prostate Gland Cancer Tissue, with DAB staining.

Macrophage Migration Inhibitory Factor Antibody is a Rabbit Polyclonal against Macrophage Migration Inhibitory Factor.

Target:	Macrophage Migration Inhibitory Factor (MIF)
Clonality:	Polyclonal
Reactivity:	Human
Tested Applications:	WB, IHC, IF/ICC
Host:	Rabbit
Recommended dilutions:	WB: 0.01-5 µg/ml, IHC: 5-20 µg/ml, IF/ICC: 5-20 µg/ml. Optimal dilutions/concentrations should be determined by the end user.
Conjugation:	Unconjugated
Immunogen:	MIF (Met3-Asn111)
Form:	Liquid
Purification:	Purified by antigen-specific affinity chromatography, followed by Protein A affinity chromatography.
Storage:	Aliquot and store at -20°C. Avoid repeated freeze/thaw cycles.
UniProt Primary AC:	P14174 (UniProt , ExPASy)
KEGG:	hsa:4282
String:	9606.ENSP00000215754
Buffer:	0.01 M PBS, pH 7.4, containing 0.05% Proclin-300, 50% glycerol.
Note:	THIS PRODUCT IS FOR RESEARCH USE ONLY. NOT FOR USE IN DIAGNOSTIC, THERAPEUTIC OR COSMETIC PROCEDURES. NOT FOR HUMAN OR ANIMAL CONSUMPTION.